

Courtesy Of Christina A Reid Of Century 21 Leading

\$614,335 - 4809 Cawsey Terrace, Edmonton

MLS® #E4463709

\$614,335

3 Bedroom, 2.50 Bathroom, 1,843 sqft
Single Family on 0.00 Acres

Chappelle Area, Edmonton, AB

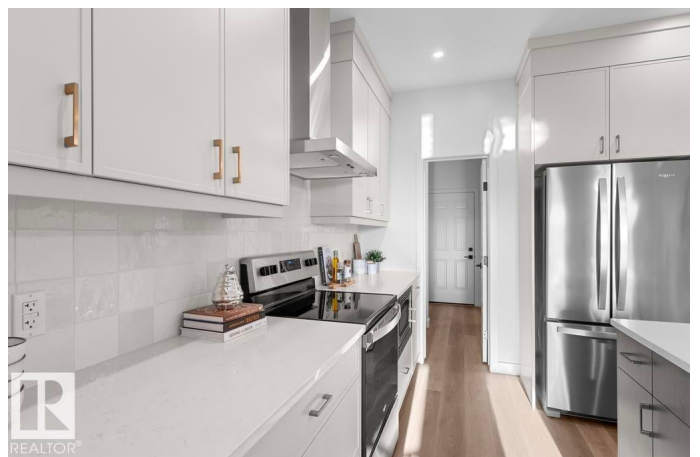
The perfect NET ZERO Single-family front-attached garage home is located on Cawsey Terrace with Upgraded Exterior Black Window Jambs and Front Landscaping. This home has a west facing backyard, backing onto a walk way and walking Distance from Frieda Hiller Park & K-9 School. **Photos are of actual home** What makes this home Net Zero: 22 Solar Panels â€“ helping you generate clean, renewable energy right from your home. Attic Insulation (580mm fiberglass loose fill) â€“ keeping your home cozy in the winter and cool in the summer. 4" Spray Foam to Rim Boards â€“ sealing in comfort and reducing drafts. 5" Spray Foam + 2" Mineral Wool in Cantilevers â€“ paired with upgraded exterior wall insulation (from R28) for superior efficiency. Enhanced Exterior Wall Assembly â€“ 2x6 construction at 16" on center, plus 2" mineral wool insulation around the entire home for consistent comfort. Foundation & Basement Insulation â€“ 3" continuous EPS on interior foundation walls and 2" rigid XPS beneath the basement slab.

Built in 2024

Essential Information

MLS® # E4463709

Price \$614,335



Bedrooms	3
Bathrooms	2.50
Full Baths	2
Half Baths	1
Square Footage	1,843
Acres	0.00
Year Built	2024
Type	Single Family
Sub-Type	Detached Single Family
Style	2 Storey
Status	Active

Community Information

Address	4809 Cawsey Terrace
Area	Edmonton
Subdivision	Chappelle Area
City	Edmonton
County	ALBERTA
Province	AB
Postal Code	T6W 5M7

Amenities

Amenities	Carbon Monoxide Detectors, Ceiling 9 ft., Detectors Smoke, Exterior Walls- 2"x6", Insulation-Upgraded, Smart/Program. Thermostat, HRV System, 9 ft. Basement Ceiling, Solar Equipment
Parking	Double Garage Attached

Interior

Interior Features	ensuite bathroom
Appliances	Dishwasher - Energy Star, Dryer, Garage Control, Garage Opener, Oven-Microwave, Refrigerator-Energy Star, Stove-Electric, Washer - Energy Star
Heating	Heat Pump, Natural Gas
Fireplace	Yes
Fireplaces	Insert
Stories	2
Has Basement	Yes
Basement	Full, Unfinished

Exterior

Exterior	Wood, Vinyl
Exterior Features	Airport Nearby, Golf Nearby, Partially Landscaped, Playground Nearby, Public Transportation, Schools, Shopping Nearby
Roof	Asphalt Shingles
Construction	Wood, Vinyl
Foundation	Concrete Perimeter

School Information

Elementary	DONALD R. GETTY
Middle	St. Thomas Aquinas
High	DR. ANNE ANDERSON

Additional Information

Date Listed	October 27th, 2025
Days on Market	8
Zoning	Zone 55
HOA Fees	426
HOA Fees Freq.	Annually

DATA IS DEEMED RELIABLE BUT IS NOT GUARANTEED ACCURATE BY THE REALTORS® ASSOCIATION OF EDMONTON. COPYRIGHT 2025 BY THE REALTORS® ASSOCIATION OF EDMONTON. ALL RIGHTS RESERVED. Trademarks are owned or controlled by the Canadian Real Estate Association (CREA) and identify real estate professionals who are members of CREA (REALTOR®, REALTORS®) and/or the quality of services they provide (MLS®, Multiple Listing Service®)

Listing information last updated on November 4th, 2025 at 5:17pm MST