

## \$429,900 - 4314 52 Street, Wetaskiwin

MLS® #E4457526

**\$429,900**

3 Bedroom, 1.50 Bathroom, 1,876 sqft

Single Family on 0.00 Acres

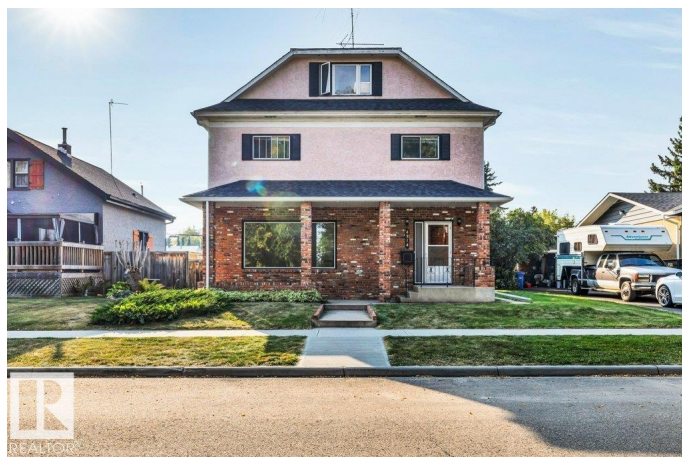
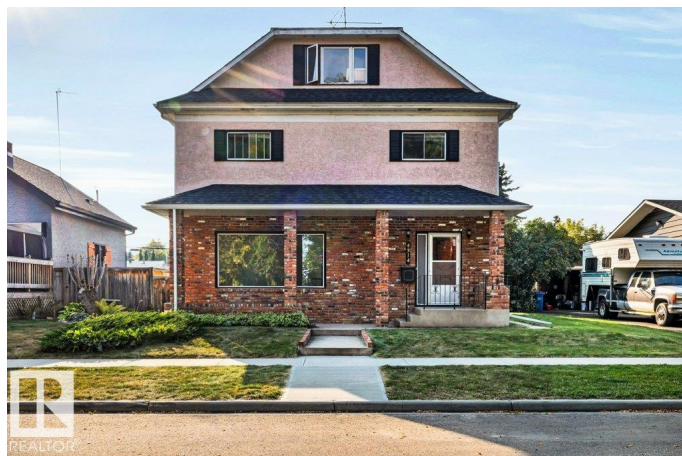
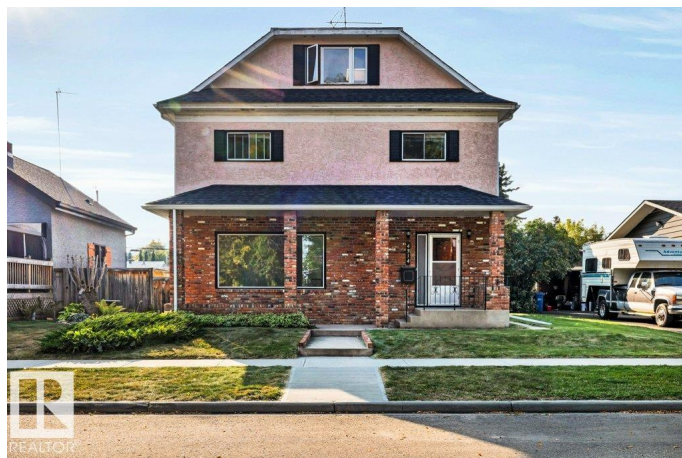
Parkdale (Wetaskiwin), Wetaskiwin, AB

Immaculate 2.5-Storey Home with Huge Shop, Custom Finishes & Loft with Wet Bar! This well-cared-for 2.5-storey home offers the perfect blend of craftsmanship, space, and functionality. From the custom black walnut cabinets to the expansive walk-out deck, every detail reflects quality and pride of ownership. Three spacious bedrooms with great natural light, 2 baths, huge open basement. Huge shop approx. 40'x23' with 10' and 8' doors ideal for hobbyists, mechanics, tradespeople, or extra storage. All located in mature area of Wetaskiwin.

Built in 1906

### Essential Information

MLS® #	E4457526
Price	\$429,900
Bedrooms	3
Bathrooms	1.50
Full Baths	1
Half Baths	1
Square Footage	1,876
Acres	0.00
Year Built	1906
Type	Single Family
Sub-Type	Detached Single Family
Style	2 and Half Storey



Status Active

### Community Information

Address 4314 52 Street  
Area Wetaskiwin  
Subdivision Parkdale (Wetaskiwin)  
City Wetaskiwin  
County ALBERTA  
Province AB  
Postal Code T9A 1N4

### Amenities

Amenities Bar, Deck, No Animal Home, No Smoking Home, R.V. Storage, Skylight, Workshop, Rooftop Deck/Patio  
Parking Spaces 6  
Parking Front/Rear Drive Access, Heated, Over Sized, RV Parking, Shop

### Interior

Appliances Dryer, Fan-Ceiling, Garage Control, Garage Opener, Microwave Hood Fan, Refrigerator, Storage Shed, Stove-Electric, Washer, Window Coverings, Garage Heater  
Heating Forced Air-1, Natural Gas  
Fireplace Yes  
Fireplaces Insert  
Stories 3  
Has Basement Yes  
Basement Full, Unfinished

### Exterior

Exterior Wood, Brick, Stucco, Hardie Board Siding  
Exterior Features Back Lane, Schools, Partially Fenced  
Roof Asphalt Shingles  
Construction Wood, Brick, Stucco, Hardie Board Siding  
Foundation Block

### Additional Information

Date Listed September 10th, 2025  
Days on Market 3  
Zoning Zone 80

DATA IS DEEMED RELIABLE BUT IS NOT GUARANTEED ACCURATE BY THE REALTORS® ASSOCIATION OF EDMONTON. COPYRIGHT 2025 BY THE REALTORS® ASSOCIATION OF EDMONTON. ALL RIGHTS RESERVED.Trademarks are owned or controlled by the Canadian Real Estate Association (CREA) and identify real estate professionals who are members of CREA (REALTOR®, REALTORS®) and/or the quality of services they provide (MLS®, Multiple Listing Service®)

Listing information last updated on September 13th, 2025 at 2:47pm MDT