

\$271,888 - 4017 52 St., Wetaskiwin

MLS® #E4457381

\$271,888

4 Bedroom, 1.00 Bathroom, 800 sqft

Single Family on 0.00 Acres

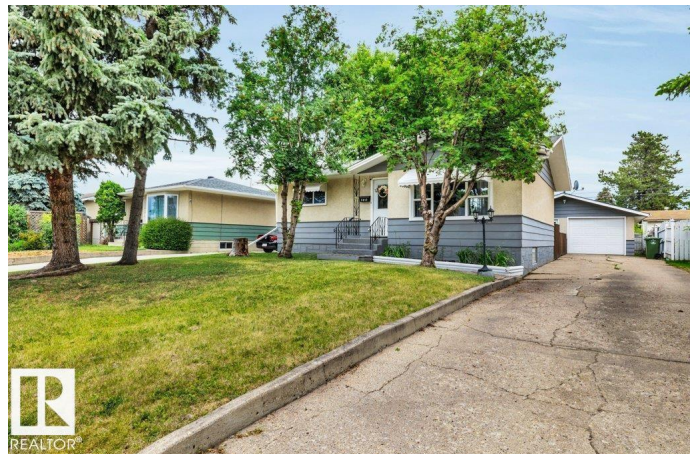
Parkdale (Wetaskiwin), Wetaskiwin, AB

This Cozy, well-maintained bungalow 2/2 bedroom home offers the perfect blend of comfort and convenience. Located in a quiet family friendly neighborhood, close to schools, Spacious Bedrooms, Fully Developed Basement, ideal for additional living space and storage. Beautifully Refurbished cabinets ,Updated Fridge and Induction Electric Stove, Vinyl Windows for improved insulation and energy efficiency. Fully Fenced Yard, Great for pets or outdoor activates. Rear East facing Deck for that morning coffee just off the Kitchen. Double Garage with front and rear over head doors. Move-in Ready. Within walking distance of Schools and shopping. This home offers everything you need for comfortable, everyday living. Whether you're retiring or just starting out this is the perfect place you'd love to call home. GET READY TO MOVE.

Built in 1969

Essential Information

MLS® #	E4457381
Price	\$271,888
Bedrooms	4
Bathrooms	1.00
Full Baths	1
Square Footage	800



Acres	0.00
Year Built	1969
Type	Single Family
Sub-Type	Detached Single Family
Style	Bungalow
Status	Active

Community Information

Address	4017 52 St.
Area	Wetaskiwin
Subdivision	Parkdale (Wetaskiwin)
City	Wetaskiwin
County	ALBERTA
Province	AB
Postal Code	T9A 1N1

Amenities

Amenities	Off Street Parking, Deck, Detectors Smoke, Hot Water Natural Gas, No Smoking Home, Television Connection, Vinyl Windows, See Remarks
Parking Spaces	6
Parking	Double Garage Detached, Front/Rear Drive Access, Insulated, Over Sized, See Remarks

Interior

Appliances	Dishwasher-Built-In, Dryer, Garage Control, Garage Opener, Refrigerator, Storage Shed, Stove-Electric, Washer, Window Coverings, Curtains and Blinds
Heating	Forced Air-1, Natural Gas
Stories	2
Has Basement	Yes
Basement	Full, Finished

Exterior

Exterior	Wood, Stucco
Exterior Features	Back Lane, Fenced, Flat Site, Fruit Trees/Shrubs, Golf Nearby, Landscaped, Picnic Area, Playground Nearby, Schools, See Remarks
Roof	Asphalt Shingles
Construction	Wood, Stucco
Foundation	Concrete Perimeter

Additional Information

Date Listed September 10th, 2025
Days on Market 3
Zoning Zone 80

DATA IS DEEMED RELIABLE BUT IS NOT GUARANTEED ACCURATE BY THE REALTORS® ASSOCIATION OF EDMONTON. COPYRIGHT 2025 BY THE REALTORS® ASSOCIATION OF EDMONTON. ALL RIGHTS RESERVED.Trademarks are owned or controlled by the Canadian Real Estate Association (CREA) and identify real estate professionals who are members of CREA (REALTOR®, REALTORS®) and/or the quality of services they provide (MLS®, Multiple Listing Service®)
Listing information last updated on September 13th, 2025 at 6:32pm MDT