

# \$569,999 - 240 Crystal Creek Drive, Leduc

MLS® #E4457251

**\$569,999**

4 Bedroom, 3.00 Bathroom, 2,110 sqft  
Single Family on 0.00 Acres

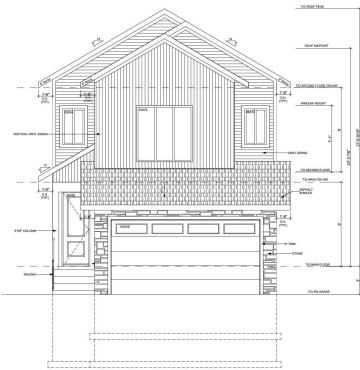
Crystal Creek\_LEDU, Leduc, AB

Discover this exceptional new build, crafted for style and comfort. 2-storey home with SPICE KITCHEN in Leduc, Backing onto a beautiful Green Space for full privacy! 2,100+ sq. ft., it features 4 beds, 3 full baths, a MAIN floor BEDROOM with FULL BATH, Beautiful Bonus room , and a spa-like primary suite. The open-to-above living area, 9-ft ceilings on all levels, side basement entrance, and garage drain add modern convenience. Enjoy high-end finishes like luxury vinyl plank, dual-tone cabinets, quartz counters, MDF shelving, and a spice kitchen. Customize your finishes! Minutes from Costco, Outlet Mall & Airport.

Built in 2025

## Essential Information

|                |                        |
|----------------|------------------------|
| MLS® #         | E4457251               |
| Price          | \$569,999              |
| Bedrooms       | 4                      |
| Bathrooms      | 3.00                   |
| Full Baths     | 3                      |
| Square Footage | 2,110                  |
| Acres          | 0.00                   |
| Year Built     | 2025                   |
| Type           | Single Family          |
| Sub-Type       | Detached Single Family |



|        |          |
|--------|----------|
| Style  | 2 Storey |
| Status | Active   |

### Community Information

|             |                         |
|-------------|-------------------------|
| Address     | 240 Crystal Creek Drive |
| Area        | Leduc                   |
| Subdivision | Crystal Creek_LEDU      |
| City        | Leduc                   |
| County      | ALBERTA                 |
| Province    | AB                      |
| Postal Code | T9E 1N9                 |

### Amenities

|           |  |
|-----------|--|
| Amenities | Carbon Monoxide Detectors, Ceiling 9 ft. |
| Parking   | Double Garage Attached                   |

### Interior

|                   |                               |
|-------------------|-------------------------------|
| Interior Features | ensuite bathroom              |
| Appliances        | Garage Control, Garage Opener |
| Heating           | Forced Air-1, Natural Gas     |
| Stories           | 2                             |
| Has Basement      | Yes                           |
| Basement          | Full, Unfinished              |

### Exterior

|                   |   |
|-------------------|---|
| Exterior          | Wood, Vinyl   |
| Exterior Features | Airport Nearby, Backs Onto Park/Trees, Schools, Shopping Nearby |
| Roof              | Asphalt Shingles  |
| Construction      | Wood, Vinyl   |
| Foundation        | Concrete Perimeter  |

### Additional Information

|                |                      |
|----------------|----------------------|
| Date Listed    | September 11th, 2025 |
| Days on Market | 2                    |
| Zoning         | Zone 81              |

DATA IS DEEMED RELIABLE BUT IS NOT GUARANTEED ACCURATE BY THE REALTORS® ASSOCIATION OF EDMONTON. COPYRIGHT 2025 BY THE REALTORS® ASSOCIATION OF EDMONTON. ALL RIGHTS RESERVED. Trademarks are owned or controlled by the Canadian Real Estate Association (CREA) and identify real estate professionals who are members of CREA (REALTOR®, REALTORS®) and/or the quality of services they provide (MLS®, Multiple Listing Service®)

Listing information last updated on September 13th, 2025 at 4:32pm MDT