

Courtesy Of Kristy D Tillapaugh Of Century 21 Masters

\$449,000 - 11716 148 Avenue, Edmonton

MLS® #E4457077

\$449,000

5 Bedroom, 3.00 Bathroom, 1,507 sqft
Single Family on 0.00 Acres

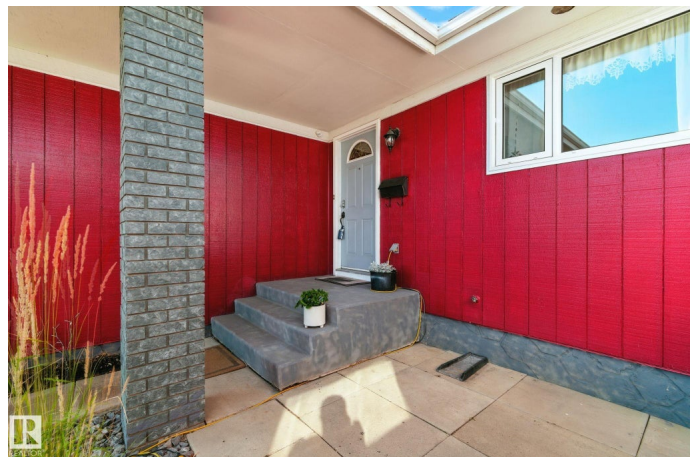
Caernarvon, Edmonton, AB

Tucked away in a quiet cul-de-sac and backing onto a trail to parks and schools, this large single-family bungalow offers the perfect blend of space, comfort, and privacy. With 5 bedrooms plus a craft room and cold storage, this home provides plenty of room for a growing family or multi-generational living. The main floor boasts a unique, spacious layout featuring two living rooms, a sunroom overlooking the beautifully landscaped backyard, and a huge open-concept kitchen ideal for entertaining. Two fireplaces add warmth and charm, while the primary suite includes a private ensuite for your retreat. The fully finished basement offers even more living space, perfect for a home theatre, gym, or guest accommodations. Updates include a newer roof, furnace, hot water tank, appliances, and gleaming hardwood floors. Comfort is enhanced year-round with central air conditioning. Outside, enjoy a lush, private yard with mature landscaping that backs directly onto a walking trail – your own peaceful escape right at home.

Built in 1973

Essential Information

MLS® #	E4457077
Price	\$449,000



Bedrooms	5
Bathrooms	3.00
Full Baths	3
Square Footage	1,507
Acres	0.00
Year Built	1973
Type	Single Family
Sub-Type	Detached Single Family
Style	Bungalow
Status	Active

Community Information

Address	11716 148 Avenue
Area	Edmonton
Subdivision	Caernarvon
City	Edmonton
County	ALBERTA
Province	AB
Postal Code	T5X 1B6

Amenities

Amenities	Deck, Sunroom
Parking	Over Sized, Single Garage Attached

Interior

Interior Features	ensuite bathroom
Appliances	Dishwasher-Built-In, Dryer, Refrigerator, Storage Shed, Stove-Electric, Vacuum Systems, Washer, Window Coverings
Heating	Forced Air-1, Natural Gas
Fireplace	Yes
Fireplaces	Brick Facing
Stories	2
Has Basement	Yes
Basement	Full, Finished

Exterior

Exterior	Wood, Brick, Stucco
Exterior Features	Backs Onto Park/Trees, Cul-De-Sac, Landscaped, Playground Nearby, Public Transportation, Schools, Shopping Nearby

Roof	Asphalt Shingles
Construction	Wood, Brick, Stucco
Foundation	Concrete Perimeter

School Information

Elementary	Caernarvon school
Middle	St. Edmund Catholic School
High	Archbishop O'Leary School

Additional Information

Date Listed	September 10th, 2025
Days on Market	4
Zoning	Zone 27

DATA IS DEEMED RELIABLE BUT IS NOT GUARANTEED ACCURATE BY THE REALTORS® ASSOCIATION OF EDMONTON. COPYRIGHT 2025 BY THE REALTORS® ASSOCIATION OF EDMONTON. ALL RIGHTS RESERVED. Trademarks are owned or controlled by the Canadian Real Estate Association (CREA) and identify real estate professionals who are members of CREA (REALTOR®, REALTORS®) and/or the quality of services they provide (MLS®, Multiple Listing Service®)

Listing information last updated on September 14th, 2025 at 9:31am MDT