

Courtesy Of Ashley L Moore Of Century 21 Masters

## \$205,000 - 541 Dunluce Road, Edmonton

MLS® #E4450645

### \$205,000

3 Bedroom, 1.50 Bathroom, 1,281 sqft  
Condo / Townhouse on 0.00 Acres

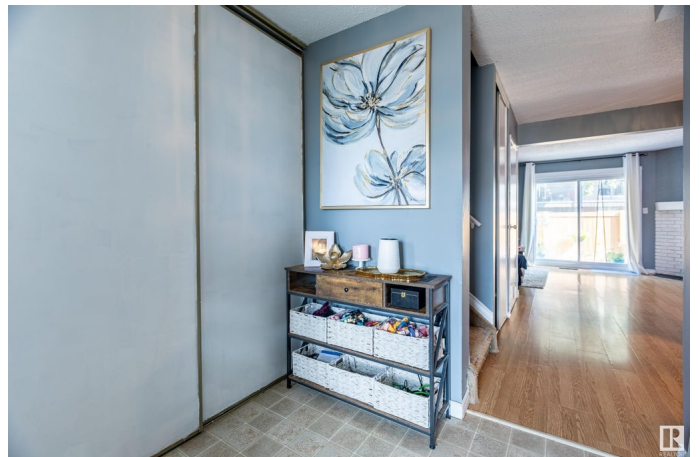
Dunluce, Edmonton, AB

Welcome Home! This well maintained condo is ready for a new owner today! Enjoy the smartly designed kitchen with pass through cut out, perfect for serving guests in your dining nook. The living space is open, bright and allows for natural light to soak the space. The main floor also has a 2 piece bathroom with a large counter to round out the space. Upstairs you will find 3 well appointed and good sized bedrooms and a bright 4 piece bathroom. The primary has a walk in closet that leads straight through to the 4 piece bathroom. The basement is unfinished and is awaiting your personal touch and imagination! This unit also comes with 2 parking stalls, a private fenced yard & low condo fees!!

Built in 1979

### Essential Information

MLS® #	E4450645
Price	\$205,000
Bedrooms	3
Bathrooms	1.50
Full Baths	1
Half Baths	1
Square Footage	1,281
Acres	0.00
Year Built	1979



Type	Condo / Townhouse
Sub-Type	Townhouse
Style	2 Storey
Status	Active

### **Community Information**

Address	541 Dunluce Road
Area	Edmonton
Subdivision	Dunluce
City	Edmonton
County	ALBERTA
Province	AB
Postal Code	T5X 4P4

### **Amenities**

Amenities	Patio
Parking	Stall

### **Interior**

Interior Features	ensuite bathroom
Appliances	Dishwasher-Built-In, Dryer, Oven-Microwave, Refrigerator, Stove-Electric, Washer, Window Coverings, TV Wall Mount
Heating	Forced Air-1, Natural Gas
Fireplace	Yes
Fireplaces	Mantel
Stories	2
Has Basement	Yes
Basement	Full, Unfinished

### **Exterior**

Exterior	Wood, Vinyl
Exterior Features	Public Transportation, Schools, Shopping Nearby
Roof	Asphalt Shingles
Construction	Wood, Vinyl
Foundation	Concrete Perimeter

### **School Information**

Elementary	Dunluce School
Middle	Mary Butterworth

High

Blessed Carlo Acutis

### **Additional Information**

Date Listed July 31st, 2025

Days on Market 2

Zoning Zone 27

Condo Fee \$376

DATA IS DEEMED RELIABLE BUT IS NOT GUARANTEED ACCURATE BY THE REALTORS® ASSOCIATION OF EDMONTON. COPYRIGHT 2025 BY THE REALTORS® ASSOCIATION OF EDMONTON. ALL RIGHTS RESERVED. Trademarks are owned or controlled by the Canadian Real Estate Association (CREA) and identify real estate professionals who are members of CREA (REALTOR®, REALTORS®) and/or the quality of services they provide (MLS®, Multiple Listing Service®)

Listing information last updated on August 2nd, 2025 at 3:02pm MDT