

\$225,770 - 1601 10149 Saskatchewan Drive, Edmonton

MLS® #E4450094

\$225,770

2 Bedroom, 2.00 Bathroom, 872 sqft

Condo / Townhouse on 0.00 Acres

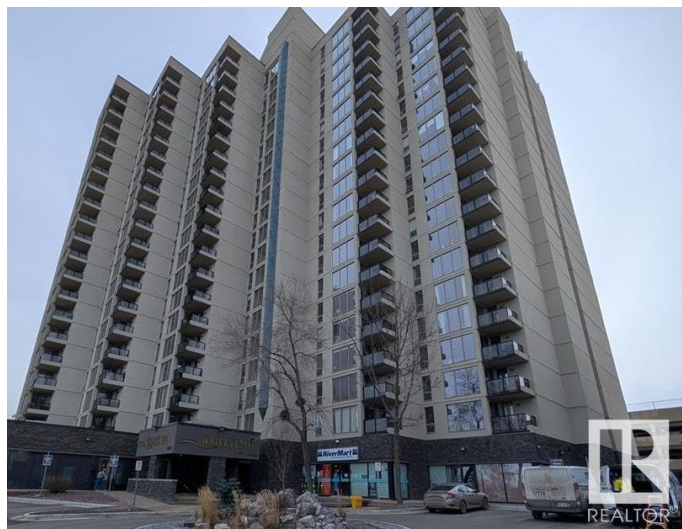
Strathcona, Edmonton, AB

Fully Renovated corner unit with breathtaking 16th-floor views of the river valley and city skyline. Located in a updated and secure building, this bright 2-bedroom, 2-bath condo features a renovated and timeless white kitchen cupboards, sleek vinyl plank flooring, two renovated bathrooms with fresh paint and fixtures throughout. The spacious living area is flooded with natural light from floor-to-ceiling windows, and opens to a glass-railed balconyâ€™perfect for year-round BBQs. Includes three appliances (stove, fridge, and dishwasher), a pantry, and an energized stall in the covered parkade. Coin laundry is conveniently located on the same floor, just steps from the unit. Building amenities include a fitness room, racquetball court, and a basketball/tennis court. Ideally located close to the University of Alberta and downtown.

Built in 1981

Essential Information

MLS® #	E4450094
Price	\$225,770
Bedrooms	2
Bathrooms	2.00
Full Baths	2
Square Footage	872
Acres	0.00



Year Built	1981
Type	Condo / Townhouse
Sub-Type	Apartment High Rise
Style	Single Level Apartment
Status	Active

Community Information

Address	1601 10149 Saskatchewan Drive
Area	Edmonton
Subdivision	Strathcona
City	Edmonton
County	ALBERTA
Province	AB
Postal Code	T6E 6B6

Amenities

Amenities	Carbon Monoxide Detectors, Detectors Smoke, Exercise Room, Intercom, No Smoking Home, Parking-Plug-Ins, Parking-Visitor, Patio, Racquet Courts, Recreation Room/Centre, Secured Parking
Parking Spaces	1
Parking	Parkade

Interior

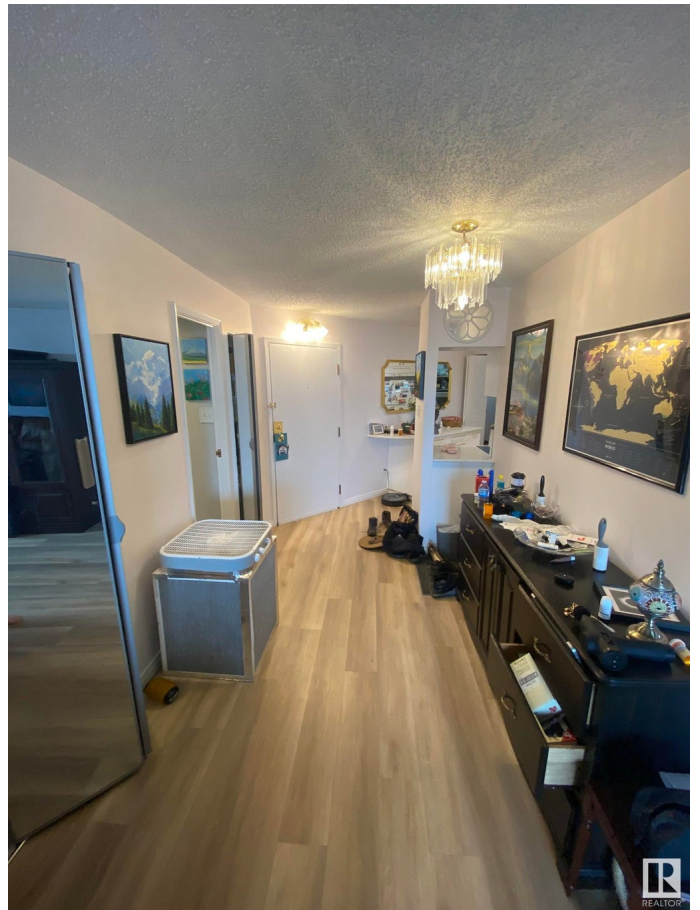
Interior Features	ensuite bathroom
Appliances	Refrigerator, Refrigerator-Energy Star, Stove-Electric
Heating	Baseboard, Natural Gas
# of Stories	20
Stories	1
Has Basement	Yes
Basement	None, No Basement

Exterior

Exterior	Concrete, Stucco
Exterior Features	Back Lane, Commercial, Paved Lane, Picnic Area, Playground Nearby, Ravine View, River View, Schools, Shopping Nearby, View City, View Downtown
Roof	Tar & Gravel
Construction	Concrete, Stucco
Foundation	Concrete Perimeter

Additional Information

Date Listed	July 28th, 2025
Days on Market	2
Zoning	Zone 15
Condo Fee	\$766



DATA IS DEEMED RELIABLE BUT IS NOT GUARANTEED ACCURATE BY THE REALTORS® ASSOCIATION OF EDMONTON. COPYRIGHT 2025 BY THE REALTORS® ASSOCIATION OF EDMONTON. ALL RIGHTS RESERVED. Trademarks are owned or controlled by the Canadian Real Estate Association (CREA) and identify real estate professionals who are members of CREA (REALTOR®, REALTORS®) and/or the quality of services they provide (MLS®, Multiple Listing Service®)

Listing information last updated on July 30th, 2025 at 1:47pm MDT