

\$185,000 - 475 Dunluce Road, Edmonton

MLS® #E4449881

\$185,000

3 Bedroom, 1.50 Bathroom, 1,269 sqft

Condo / Townhouse on 0.00 Acres

Dunluce, Edmonton, AB

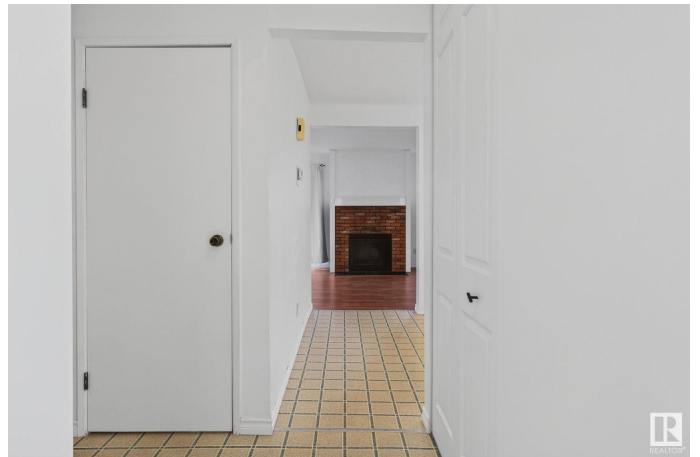
Welcome to Dunluce! This bright and spacious end-unit townhome offers the perfect blend of comfort, convenience, and community. Enjoy walking distance to Dunluce Park and Herb Link Park. Just minutes away, the Castle Downs Recreation Centre offers a full range of amenities, including a pool, skating rink, and fitness facilities. Everyday essentials are within easy reach with Beaumaris Mall, Cumberland Centre, and Griesbach Plaza nearby, plus convenient access to Sobeys, Save-On-Foods, Superstore, and more. Commuters will love the quick connections to major roadways and public transit, making travel throughout the city a breeze. Families will appreciate nearby schools like Dunluce Elementary and St. Lucy Catholic Elementary, along with the active Dunluce Community League, offering year-round programs and events. With entertainment options such as Cineplex Odeon, Woodlands Waterpark, and the Alberta Aviation Museum just a short drive away, this location truly has it all. Donâ€™t miss out!

Built in 1980

Essential Information

MLS® # E4449881

Price \$185,000



Bedrooms	3
Bathrooms	1.50
Full Baths	1
Half Baths	1
Square Footage	1,269
Acres	0.00
Year Built	1980
Type	Condo / Townhouse
Sub-Type	Townhouse
Style	2 Storey
Status	Active

Community Information

Address	475 Dunluce Road
Area	Edmonton
Subdivision	Dunluce
City	Edmonton
County	ALBERTA
Province	AB
Postal Code	T5X 4Y5

Amenities

Amenities	On Street Parking, Deck, No Animal Home, No Smoking Home, Parking-Extra, Parking-Plug-Ins, Parking-Visitor
Parking	Stall

Interior

Appliances	Dishwasher-Built-In, Dryer, Hood Fan, Refrigerator, Stove-Electric, Washer, Window Coverings
Heating	Forced Air-1, Natural Gas
Fireplace	Yes
Fireplaces	Woodstove
Stories	2
Has Basement	Yes
Basement	Full, Partially Finished

Exterior

Exterior	Wood, Vinyl
Exterior Features	Fenced, Flat Site, Level Land, Low Maintenance Landscape,

	Park/Reserve, Playground Nearby, Public Transportation, Schools, Shopping Nearby
Roof	Asphalt Shingles
Construction	Wood, Vinyl
Foundation	Concrete Perimeter

Additional Information

Date Listed	July 26th, 2025
Days on Market	5
Zoning	Zone 27
Condo Fee	\$422

DATA IS DEEMED RELIABLE BUT IS NOT GUARANTEED ACCURATE BY THE REALTORS® ASSOCIATION OF EDMONTON. COPYRIGHT 2025 BY THE REALTORS® ASSOCIATION OF EDMONTON. ALL RIGHTS RESERVED. Trademarks are owned or controlled by the Canadian Real Estate Association (CREA) and identify real estate professionals who are members of CREA (REALTOR®, REALTORS®) and/or the quality of services they provide (MLS®, Multiple Listing Service®)

Listing information last updated on July 31st, 2025 at 8:47am MDT