

Courtesy Of Alexine McTeer Of Real Broker

\$425,000 - 14602 104 Avenue, Edmonton

MLS® #E4449823

\$425,000

4 Bedroom, 2.50 Bathroom, 1,327 sqft

Single Family on 0.00 Acres

Grovenor, Edmonton, AB

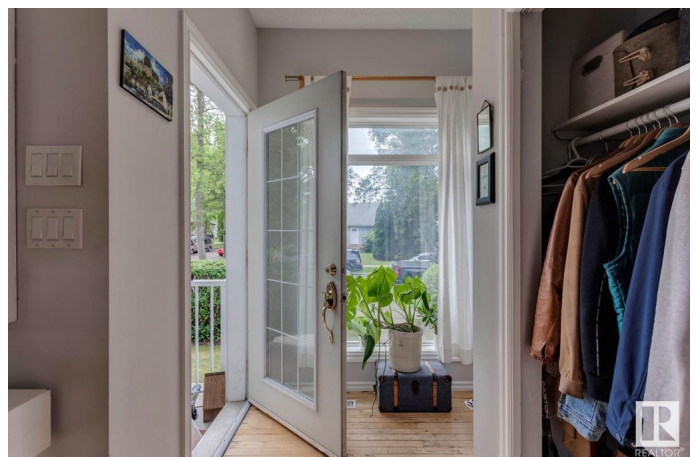
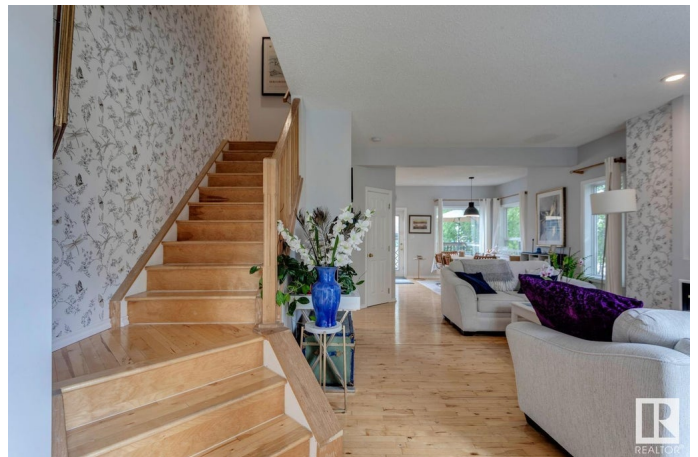
Step into this beautifully updated half duplex nestled on a private, tree-lined corner lot in Grovenor, just minutes from downtown and the river valley! Inside, youâ€™™ll find warm knotty pine hardwood floors flowing through the main level & into the serene primary retreat. The open-concept main floor is flooded w/ natural light from oversized windows, complemented by a cozy gas fireplace & a stylish 2-piece powder room. The kitchen has been tastefully updated w/ modern cabinetry, a new backsplash, wood-inspired countertops & updated lighting. Upstairs, the spacious master retreat feat. large windows w/ tranquil tree canopy views. A second generous bdrm & a full bath complete the upper level. The fully finished basement adds incredible flexibility with two add'l bdrms, a full bath, and plenty of space for guests or a home office. Add'l highlights incl. a new HWT, a newer deck for summer enjoyment, and an oversized double detached garage. Come experience the charm, comfort, and convenience of Grovenor living!

Built in 2004

Essential Information

MLS® # E4449823

Price \$425,000



Bedrooms	4
Bathrooms	2.50
Full Baths	2
Half Baths	1
Square Footage	1,327
Acres	0.00
Year Built	2004
Type	Single Family
Sub-Type	Half Duplex
Style	2 Storey
Status	Active

Community Information

Address	14602 104 Avenue
Area	Edmonton
Subdivision	Grovenor
City	Edmonton
County	ALBERTA
Province	AB
Postal Code	T5N 0X4

Amenities

Amenities	Detectors Smoke, Fire Pit, Natural Gas BBQ Hookup
Parking	Double Garage Detached

Interior

Appliances	Dishwasher-Built-In, Dryer, Garage Control, Hood Fan, Refrigerator, Stove-Electric, Washer, Window Coverings
Heating	Forced Air-1, Natural Gas
Fireplace	Yes
Fireplaces	Insert
Stories	3
Has Basement	Yes
Basement	Full, Finished

Exterior

Exterior	Wood, Vinyl
Exterior Features	Corner Lot, Public Transportation, Schools, Shopping Nearby, Treed Lot, See Remarks, Partially Fenced

Roof	Asphalt Shingles
Construction	Wood, Vinyl
Foundation	Concrete Perimeter

Additional Information

Date Listed	July 25th, 2025
Days on Market	6
Zoning	Zone 21

DATA IS DEEMED RELIABLE BUT IS NOT GUARANTEED ACCURATE BY THE REALTORS® ASSOCIATION OF EDMONTON. COPYRIGHT 2025 BY THE REALTORS® ASSOCIATION OF EDMONTON. ALL RIGHTS RESERVED.Trademarks are owned or controlled by the Canadian Real Estate Association (CREA) and identify real estate professionals who are members of CREA (REALTOR®, REALTORS®) and/or the quality of services they provide (MLS®, Multiple Listing Service®)

Listing information last updated on July 31st, 2025 at 8:02am MDT