

\$434,900 - 5696 Juchli Avenue, Edmonton

MLS® #E4449733

\$434,900

3 Bedroom, 2.50 Bathroom, 1,548 sqft

Single Family on 0.00 Acres

Griesbach, Edmonton, AB

Welcome to Griesbach—one of Edmonton’s most sought-after communities, known for its scenic lakes, walking trails, parks, and rich military heritage. This 2022 Coventry-built NO CONDO FEE townhome offers approx. 1548 sq. ft. of like-new living space with timeless finishes. The main floor features vinyl plank flooring, custom lighting, an open-concept layout with a bright living room and dedicated dining area. The stylish kitchen has modern white cabinetry, quartz countertops, large island, and stainless steel appliances. A convenient 2-piece bath completes the main level. Upstairs offers 3 spacious bedrooms, including a primary suite with a 4-piece ensuite, and the added bonus of upper floor laundry. Enjoy outdoor living with a front porch, back deck, fenced yard, and double detached garage. Perfect for a growing family. Ideally located near schools, shopping, transit, and just 10 minutes to downtown—this is Griesbach living at its best.

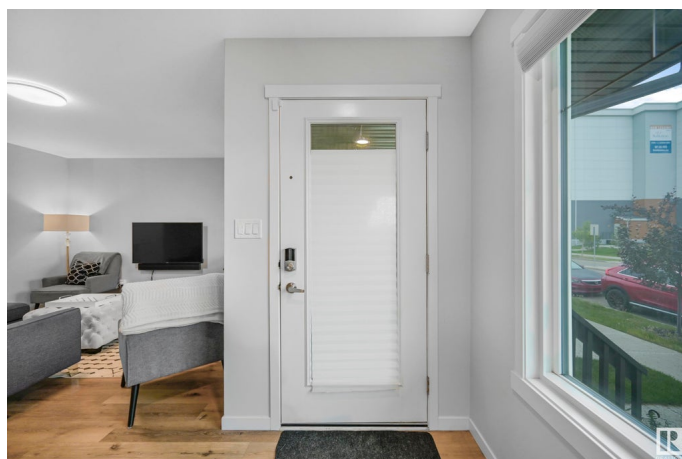
Built in 2022

Essential Information

MLS® # E4449733

Price \$434,900

Bedrooms 3



Bathrooms	2.50
Full Baths	2
Half Baths	1
Square Footage	1,548
Acres	0.00
Year Built	2022
Type	Single Family
Sub-Type	Residential Attached
Style	2 Storey
Status	Active

Community Information

Address	5696 Juchli Avenue
Area	Edmonton
Subdivision	Griesbach
City	Edmonton
County	ALBERTA
Province	AB
Postal Code	T5E 6Y2

Amenities

Amenities	Deck, Front Porch, See Remarks
Parking Spaces	2
Parking	Double Garage Detached

Interior

Interior Features	ensuite bathroom
Appliances	Dishwasher-Built-In, Garage Control, Garage Opener, Microwave Hood Fan, Refrigerator, Stacked Washer/Dryer, Stove-Electric, Window Coverings, TV Wall Mount
Heating	Forced Air-1, Natural Gas
Stories	2
Has Basement	Yes
Basement	Full, Unfinished

Exterior

Exterior	Wood, Stone, Vinyl
Exterior Features	Back Lane, Fenced, Low Maintenance Landscape, Playground Nearby, Public Transportation, Schools, Shopping Nearby

Roof	Asphalt Shingles
Construction	Wood, Stone, Vinyl
Foundation	Concrete Perimeter

School Information

Elementary	Major-General Griesbach S
Middle	Major-General Griesbach S
High	Queen Elizabeth School

Additional Information

Date Listed	July 25th, 2025
Days on Market	6
Zoning	Zone 27

DATA IS DEEMED RELIABLE BUT IS NOT GUARANTEED ACCURATE BY THE REALTORS® ASSOCIATION OF EDMONTON. COPYRIGHT 2025 BY THE REALTORS® ASSOCIATION OF EDMONTON. ALL RIGHTS RESERVED. Trademarks are owned or controlled by the Canadian Real Estate Association (CREA) and identify real estate professionals who are members of CREA (REALTOR®, REALTORS®) and/or the quality of services they provide (MLS®, Multiple Listing Service®)

Listing information last updated on July 31st, 2025 at 8:02am MDT