

\$400,000 - 414 200 Bethel Drive, Sherwood Park

MLS® #E4449666

\$400,000

2 Bedroom, 2.00 Bathroom, 1,285 sqft
Condo / Townhouse on 0.00 Acres

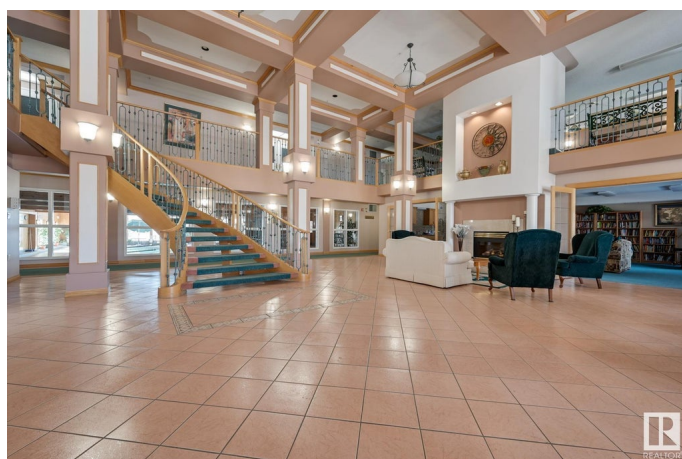
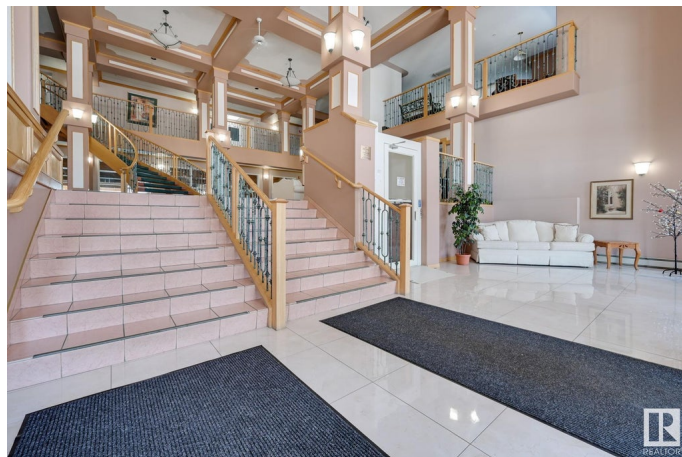
Strathcona Village, Sherwood Park, AB

Top-floor corner unit in the sought-after Sierra™s of Sherwood Park, a well-managed 55+ building loaded with amenities! This spacious condo is filled with natural light and offers a picturesque view, 9'™ ceilings, and durable ceramic tile flooring throughout—no carpet here! The kitchen features a large island, perfect for entertaining, and the living room is warmed by a cozy gas fireplace. The primary suite includes a walk-in closet with custom California Closet organizers, while the second bath boasts a rejuvenating steam shower. Step outside to a large, covered balcony with a natural gas BBQ hookup—ideal for year-round enjoyment. Enjoy access to an indoor pool and hot tub, fitness centre, 2 games rooms, media and craft rooms, woodworking shop, party room, and a heated underground parkade with car wash. Maintenance-free living at its best!

Built in 1999

Essential Information

MLS® #	E4449666
Price	\$400,000
Bedrooms	2
Bathrooms	2.00
Full Baths	2



Square Footage	1,285
Acres	0.00
Year Built	1999
Type	Condo / Townhouse
Sub-Type	Lowrise Apartment
Style	Single Level Apartment
Status	Active

Community Information

Address	414 200 Bethel Drive
Area	Sherwood Park
Subdivision	Strathcona Village
City	Sherwood Park
County	ALBERTA
Province	AB
Postal Code	T8H 2C5

Amenities

Amenities	Detectors Smoke, Exercise Room, Guest Suite, Parking-Visitor, Pool-Indoor, Secured Parking, Security Door, Social Rooms, Sprinkler System-Fire
Parking	Stall
Has Pool	Yes

Interior

Interior Features	ensuite bathroom
Appliances	Dishwasher-Built-In, Dryer, Oven-Microwave, Refrigerator, Stove-Electric, Washer, Window Coverings
Heating	Baseboard, Natural Gas
# of Stories	4
Stories	1
Has Basement	Yes
Basement	None, No Basement

Exterior

Exterior	Wood, Brick, Stucco
Exterior Features	Backs Onto Park/Trees, Flat Site, Landscaped, Public Transportation, Shopping Nearby
Roof	Concrete Tiles

Construction	Wood, Brick, Stucco
Foundation	Concrete Perimeter

Additional Information

Date Listed	July 25th, 2025
Days on Market	6
Zoning	Zone 25
Condo Fee	\$935

DATA IS DEEMED RELIABLE BUT IS NOT GUARANTEED ACCURATE BY THE REALTORS® ASSOCIATION OF EDMONTON. COPYRIGHT 2025 BY THE REALTORS® ASSOCIATION OF EDMONTON. ALL RIGHTS RESERVED.Trademarks are owned or controlled by the Canadian Real Estate Association (CREA) and identify real estate professionals who are members of CREA (REALTOR®, REALTORS®) and/or the quality of services they provide (MLS®, Multiple Listing Service®)

Listing information last updated on July 31st, 2025 at 2:02am MDT