

## \$399,900 - 10814 20a Avenue, Edmonton

MLS® #E4449600

**\$399,900**

4 Bedroom, 2.50 Bathroom, 1,190 sqft

Single Family on 0.00 Acres

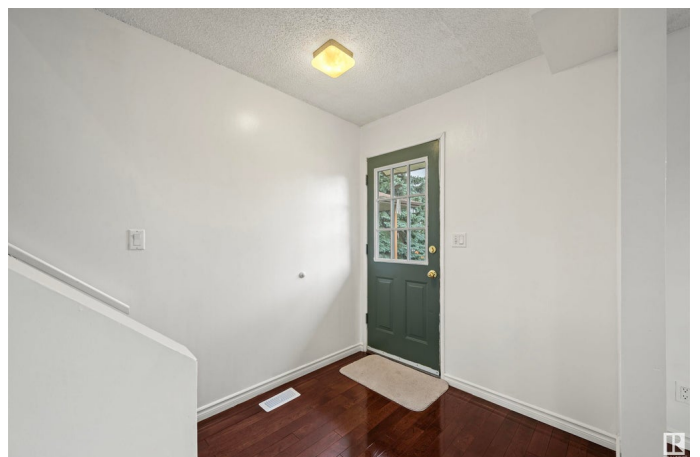
Keheewin, Edmonton, AB

Immaculate single family home in Keheewin with a detached double garage offered at under \$400K! A fantastic opportunity for investors or first-time buyers ready to break free from condo fees. This well-maintained home offers 3 spacious bedrooms upstairs, a 4th bedroom in the fully finished basement, 2 full bathrooms, and a convenient half bath on the main floor. The bright and functional layout features an updated kitchen with stainless steel appliances, fresh paint, newer shingles (2018), and vinyl windows (2017). Enjoy outdoor space with a private yard and the added convenience of a full double garage. Located on a quiet street in a mature and highly desirable Southwest Edmonton neighborhood, with excellent access to schools, shopping, parks, LRT, and major commuter routes. This move-in-ready home offers comfort, value, and potential—don't miss your chance to make it yours!

Built in 1983

### Essential Information

MLS® #	E4449600
Price	\$399,900
Bedrooms	4
Bathrooms	2.50



Full Baths	2
Half Baths	1
Square Footage	1,190
Acres	0.00
Year Built	1983
Type	Single Family
Sub-Type	Detached Single Family
Style	2 Storey
Status	Active

### **Community Information**

Address	10814 20a Avenue
Area	Edmonton
Subdivision	Keheewin
City	Edmonton
County	ALBERTA
Province	AB
Postal Code	T6J 5T3

### **Amenities**

Amenities	On Street Parking, No Animal Home, No Smoking Home, Parking-Extra, Vinyl Windows
Parking Spaces	4
Parking	Double Garage Detached

### **Interior**

Appliances	Dryer, Refrigerator, Stove-Electric, Washer, Window Coverings
Heating	Forced Air-1, Natural Gas
Stories	3
Has Basement	Yes
Basement	Full, Finished

### **Exterior**

Exterior	Wood, Stucco
Exterior Features	Back Lane, Fenced, Park/Reserve, Paved Lane, Playground Nearby, Public Transportation, Schools, Shopping Nearby
Roof	Asphalt Shingles
Construction	Wood, Stucco
Foundation	Concrete Perimeter

**School Information**

Elementary	Keheewin Elementary
Middle	Steinhauer Junior High
High	Harry Ainlay High School

**Additional Information**

Date Listed	July 25th, 2025
Days on Market	6
Zoning	Zone 16

DATA IS DEEMED RELIABLE BUT IS NOT GUARANTEED ACCURATE BY THE REALTORS® ASSOCIATION OF EDMONTON. COPYRIGHT 2025 BY THE REALTORS® ASSOCIATION OF EDMONTON. ALL RIGHTS RESERVED.Trademarks are owned or controlled by the Canadian Real Estate Association (CREA) and identify real estate professionals who are members of CREA (REALTOR®, REALTORS®) and/or the quality of services they provide (MLS®, Multiple Listing Service®)

Listing information last updated on July 31st, 2025 at 9:18am MDT