

\$519,000 - 62 Silverstone Drive, Stony Plain

MLS® #E4444327

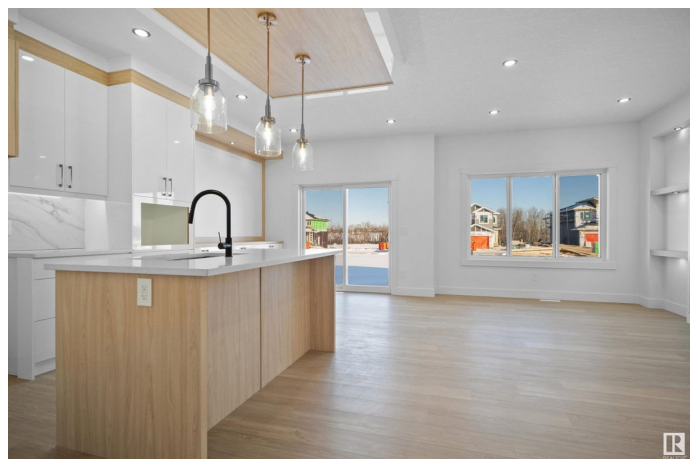
\$519,000

3 Bedroom, 2.50 Bathroom, 1,864 sqft

Single Family on 0.00 Acres

Silverstone, Stony Plain, AB

Regular Lot! Welcome to this beautifully designed brand-new home in the vibrant Silverstone community of Stony Plain! Offering over 1800 sq. ft. of thoughtfully planned living space, this 3-bedroom, 2.5-bath home blends style and functionality for the modern family. The main floor features 9'™ ceilings, a spacious family room, open dining area, and a chef's kitchen with a large island and walk-in pantry. You'll also find a welcoming foyer, a stylish powder room, and an expansive mudroom for everyday convenience. Upstairs, the luxurious primary suite offers a walk-in closet and a beautiful 4-piece ensuite. There are two additional bedrooms and a full bathroom, perfect for family and guests. Unwind in the spacious bonus room—ideal for movie nights, a kids' play area, or a cozy reading nook. The upper-level walk-in laundry room adds a touch of everyday convenience. This home is just minutes from parks, schools, and shopping—perfect for growing families or first-time buyers. (Photos are representative)



Built in 2025

Essential Information

MLS® # E4444327

Price \$519,000

Bedrooms	3
Bathrooms	2.50
Full Baths	2
Half Baths	1
Square Footage	1,864
Acres	0.00
Year Built	2025
Type	Single Family
Sub-Type	Detached Single Family
Style	2 Storey
Status	Active

Community Information

Address	62 Silverstone Drive
Area	Stony Plain
Subdivision	Silverstone
City	Stony Plain
County	ALBERTA
Province	AB
Postal Code	T7Z 0E8

Amenities

Amenities	See Remarks
Parking	Double Garage Attached

Interior

Interior Features	ensuite bathroom
Appliances	Builder Appliance Credit
Heating	Forced Air-1, Natural Gas, See Remarks
Fireplace	Yes
Fireplaces	Insert
Stories	2
Has Basement	Yes
Basement	Full, Unfinished

Exterior

Exterior	Wood, Asphalt
Exterior Features	Playground Nearby, Schools, Shopping Nearby, See Remarks
Roof	Asphalt Shingles

Construction	Wood, Asphalt
Foundation	Concrete Perimeter

Additional Information

Date Listed	June 25th, 2025
Days on Market	24
Zoning	Zone 91

DATA IS DEEMED RELIABLE BUT IS NOT GUARANTEED ACCURATE BY THE REALTORS® ASSOCIATION OF EDMONTON. COPYRIGHT 2025 BY THE REALTORS® ASSOCIATION OF EDMONTON. ALL RIGHTS RESERVED.Trademarks are owned or controlled by the Canadian Real Estate Association (CREA) and identify real estate professionals who are members of CREA (REALTOR®, REALTORS®) and/or the quality of services they provide (MLS®, Multiple Listing Service®)

Listing information last updated on July 19th, 2025 at 4:17pm MDT