

# **\$158,500 - 311 13710 150 Avenue, Edmonton**

MLS® #E4443164

**\$158,500**

1 Bedroom, 1.00 Bathroom, 650 sqft

Condo / Townhouse on 0.00 Acres

Cumberland, Edmonton, AB

Stylish, Upgraded 1-Bedroom Condo with East-Facing Balcony & Underground Parking! Welcome to this bright & beautifully upgraded one-bedroom condo, perfectly positioned on the east side to capture stunning morning light. This move-in-ready unit features a spacious open layout, modern finishes throughout & a private balcony—ideal for enjoying your coffee or relaxing outdoors. The kitchen has been tastefully updated with contemporary cabinetry and sleek countertops, while the living area offers a comfortable, sunlit space to unwind or entertain. The living plant wall brings allows for natural beauty. The generously sized bedroom provides ample closet space & the stylish bathroom complements the modern design. Enjoy the convenience of in-suite laundry, heated underground parking & added peace of mind in a well-maintained, secure building. Whether you™re a first-time buyer, downsizer, or investor, this condo offers excellent value in a prime location. The property offers a gym and amenities room.

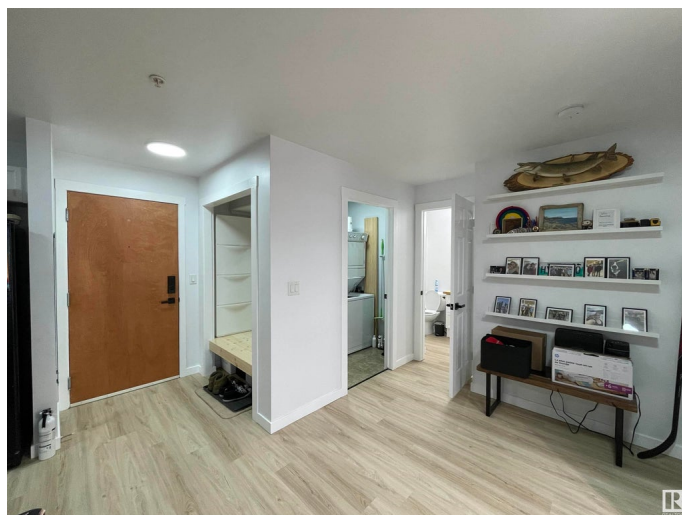
Built in 2006

## **Essential Information**

MLS® # E4443164

Price \$158,500

Bedrooms 1



Bathrooms	1.00
Full Baths	1
Square Footage	650
Acres	0.00
Year Built	2006
Type	Condo / Townhouse
Sub-Type	Apartment High Rise
Style	Single Level Apartment
Status	Active

### **Community Information**

Address	311 13710 150 Avenue
Area	Edmonton
Subdivision	Cumberland
City	Edmonton
County	ALBERTA
Province	AB
Postal Code	T6V 0B2

### **Amenities**

Amenities	Exercise Room, No Smoking Home, Parking-Visitor, Party Room, Sprinkler System-Fire
Parking	Heated, Parkade, Underground

### **Interior**

Appliances	Dishwasher-Built-In, Dryer, Microwave Hood Fan, Refrigerator, Stove-Electric, Washer
Heating	Baseboard, Hot Water, Natural Gas
# of Stories	4
Stories	1
Has Basement	Yes
Basement	None, No Basement

### **Exterior**

Exterior	Wood, Vinyl
Exterior Features	Schools, Shopping Nearby
Roof	Asphalt Shingles
Construction	Wood, Vinyl
Foundation	Concrete Perimeter

**Additional Information**

Date Listed	June 19th, 2025
Days on Market	7
Zoning	Zone 27
Condo Fee	\$477

DATA IS DEEMED RELIABLE BUT IS NOT GUARANTEED ACCURATE BY THE REALTORS® ASSOCIATION OF EDMONTON. COPYRIGHT 2025 BY THE REALTORS® ASSOCIATION OF EDMONTON. ALL RIGHTS RESERVED.Trademarks are owned or controlled by the Canadian Real Estate Association (CREA) and identify real estate professionals who are members of CREA (REALTOR®, REALTORS®) and/or the quality of services they provide (MLS®, Multiple Listing Service®)

Listing information last updated on June 26th, 2025 at 5:02pm MDT