

\$648,998 - 331 Foxhaven Bay, Sherwood Park

MLS® #E4442935

\$648,998

4 Bedroom, 3.00 Bathroom, 1,511 sqft

Single Family on 0.00 Acres

Foxhaven, Sherwood Park, AB

Welcome to Foxhaven—a mature, family-friendly neighbourhood known for its quiet streets, scenic trails, & close proximity to parks, schools, & everyday essentials. Tucked into a quiet cul-de-sac, this simply stunning 4-bedrm, 3-bath bi-level offers just over 1,510 sq ft of well-appointed living space. The main floor features hardwood throughout, a spacious living room w/ large windows, a cozy FP & a beautifully updated kitchen w/ quartz counters, SS appliances, & a WI pantry. The private upper-level primary suite includes a WI closet & a 4pc ensuite w/ a soaker tub. Downstairs, the fully finished basement adds incredible versatility w/ a second FP, built-in bar, full bath, & an additional bedrm. Step outside to enjoy the beautifully landscaped backyard, ideal for warm summer evenings, & take advantage of the oversized heated garage w/ ample room for parking and storage. W/ walking trails, playgrounds & nature right at your doorstep, Foxhaven offers the best of both convenience & natural beauty.

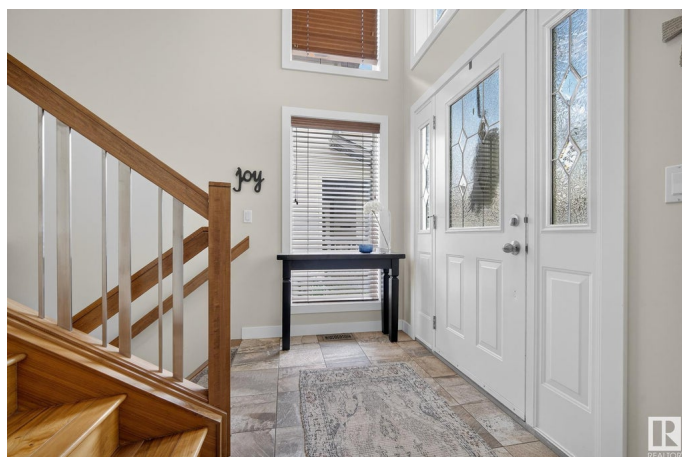
Built in 2003

Essential Information

MLS® # E4442935

Price \$648,998

Bedrooms 4



Bathrooms	3.00
Full Baths	3
Square Footage	1,511
Acres	0.00
Year Built	2003
Type	Single Family
Sub-Type	Detached Single Family
Style	Bi-Level
Status	Active

Community Information

Address	331 Foxhaven Bay
Area	Sherwood Park
Subdivision	Foxhaven
City	Sherwood Park
County	ALBERTA
Province	AB
Postal Code	T8A 6L1

Amenities

Amenities	Air Conditioner, Deck, See Remarks
Parking	Double Garage Attached, Heated, Over Sized

Interior

Interior Features	ensuite bathroom
Appliances	Air Conditioning-Central, Dishwasher-Built-In, Dryer, Garage Control, Garage Opener, Refrigerator, Stove-Gas, Washer, Window Coverings, Garage Heater
Heating	Forced Air-1, Natural Gas
Stories	2
Has Basement	Yes
Basement	Full, Finished

Exterior

Exterior	Wood, Brick, Vinyl
Exterior Features	Fenced, Flat Site, Landscaped, Playground Nearby, Public Transportation, Schools, Shopping Nearby
Roof	Asphalt Shingles
Construction	Wood, Brick, Vinyl

Foundation Concrete Perimeter

Additional Information

Date Listed June 18th, 2025

Days on Market 4

Zoning Zone 25

DATA IS DEEMED RELIABLE BUT IS NOT GUARANTEED ACCURATE BY THE REALTORS® ASSOCIATION OF EDMONTON. COPYRIGHT 2025 BY THE REALTORS® ASSOCIATION OF EDMONTON. ALL RIGHTS RESERVED.Trademarks are owned or controlled by the Canadian Real Estate Association (CREA) and identify real estate professionals who are members of CREA (REALTOR®, REALTORS®) and/or the quality of services they provide (MLS®, Multiple Listing Service®)

Listing information last updated on June 22nd, 2025 at 1:17pm MDT