

Courtesy Of Jonathan C Hull Of 2% Realty Pro

\$182,900 - 17003 67 Avenue, Edmonton

MLS® #E4442030

\$182,900

2 Bedroom, 2.00 Bathroom, 809 sqft
Condo / Townhouse on 0.00 Acres

Callingwood South, Edmonton, AB

WHAT A DEAL!! VERY RARE, TWO bedroom, TWO bathroom condo with TWO TITLE HEATED UNDERGROUND STALLS side by side. Located in south Callingwood located just minutes from WEM, Callingwood Square, schools, the Henday and Whitemud. This unit features UPGRADED laminate flooring, quartz counters throughout, additional cabinet space in the kitchen, bathrooms and laundry room and gas fireplace in the living room. California split with bedrooms on opposite side of the living space including a master with 4pc ensuite. Truly a unique find at this price. The condo offers reasonable condo fees including heat and water. Perfect starter condo for young family, couple or roommates.

Built in 2004

Essential Information

MLS® #	E4442030
Price	\$182,900
Bedrooms	2
Bathrooms	2.00
Full Baths	2
Square Footage	809
Acres	0.00
Year Built	2004
Type	Condo / Townhouse



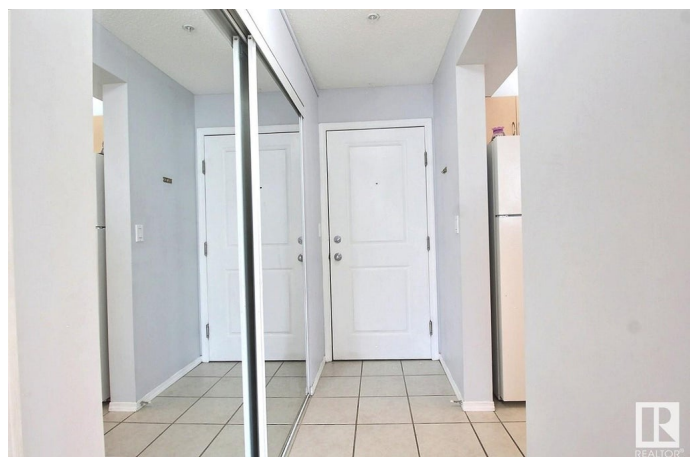
302-17003 67 Ave NW, Edmonton, AB

Main Floor Interior Area 809.50 sq ft



PREPARED: 2025/04/09

White regions are excluded from total floor area in GUIDE floor plans. All room dimensions and floor areas must be considered approximate and are subject to independent verification.



Sub-Type	Lowrise Apartment
Style	Single Level Apartment
Status	Active

Community Information

Address	17003 67 Avenue
Area	Edmonton
Subdivision	Callingwood South
City	Edmonton
County	ALBERTA
Province	AB
Postal Code	T5T 6Y7

Amenities

Amenities	Intercom, Parking-Visitor
Parking Spaces	2
Parking	Heated, Underground, See Remarks

Interior

Interior Features	ensuite bathroom
Appliances	Dishwasher-Built-In, Microwave Hood Fan, Refrigerator, Stacked Washer/Dryer, Stove-Electric, Window Coverings
Heating	Hot Water, Natural Gas
Fireplace	Yes
Fireplaces	Corner
# of Stories	4
Stories	1
Has Basement	Yes
Basement	None, No Basement

Exterior

Exterior	Wood, Brick, Hardie Board Siding
Exterior Features	Playground Nearby, Public Transportation, Schools, Shopping Nearby, See Remarks
Roof	Asphalt Shingles
Construction	Wood, Brick, Hardie Board Siding
Foundation	Concrete Perimeter

Additional Information

Date Listed	June 12th, 2025
Days on Market	3
Zoning	Zone 20
Condo Fee	\$436

DATA IS DEEMED RELIABLE BUT IS NOT GUARANTEED ACCURATE BY THE REALTORS® ASSOCIATION OF EDMONTON. COPYRIGHT 2025 BY THE REALTORS® ASSOCIATION OF EDMONTON. ALL RIGHTS RESERVED. Trademarks are owned or controlled by the Canadian Real Estate Association (CREA) and identify real estate professionals who are members of CREA (REALTOR®, REALTORS®) and/or the quality of services they provide (MLS®, Multiple Listing Service®)

Listing information last updated on June 15th, 2025 at 11:32am MDT