

\$89,500 - 906 9028 Jasper Avenue, Edmonton

MLS® #E4441888

\$89,500

2 Bedroom, 1.00 Bathroom, 856 sqft

Condo / Townhouse on 0.00 Acres

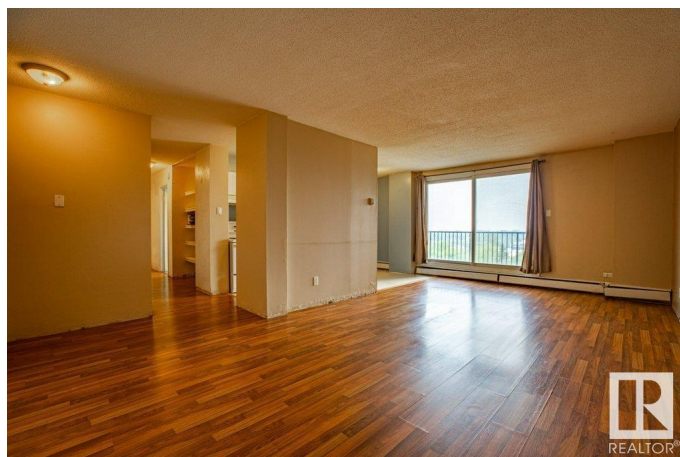
Boyle Street, Edmonton, AB

Imagine waking up to incredible 9th-floor city views before stepping out your door to the buzz of Jasper Avenue. This isn't just a condo; it's your launchpad to the ultimate downtown lifestyle in the solid, concrete Viewpoint building. This 857 sq ft, 2-bedroom home is ready for your design ideas, but its prime location is undeniable. Explore local eateries, browse unique shops, or enjoy a night out without ever needing a car. With seamless access to transit, the core, and river valley trails, your weekends will be filled with adventure. Featuring one of the largest floor plans in the building, this unit is a fantastic foundation to add immediate value and your personal style. A heated underground parking stall and a convenient storage cage are included. If you're seeking a home that combines an unbeatable location with outstanding potential, this is it. See it today and start planning your new life!

Built in 1971

Essential Information

MLS® #	E4441888
Price	\$89,500
Bedrooms	2
Bathrooms	1.00
Full Baths	1



Square Footage	856
Acres	0.00
Year Built	1971
Type	Condo / Townhouse
Sub-Type	Apartment High Rise
Style	Single Level Apartment
Status	Active

Community Information

Address	906 9028 Jasper Avenue
Area	Edmonton
Subdivision	Boyle Street
City	Edmonton
County	ALBERTA
Province	AB
Postal Code	T5H 3Y6

Amenities

Amenities	Storage Cage
Parking Spaces	1
Parking	Underground

Interior

Appliances	See Remarks
Heating	Baseboard, Hot Water, Natural Gas
# of Stories	11
Stories	1
Has Basement	Yes
Basement	None, No Basement

Exterior

Exterior	Concrete, Stucco
Exterior Features	River Valley View, Schools, Shopping Nearby, View City, View Downtown
Roof	Tar & Gravel
Construction	Concrete, Stucco
Foundation	Concrete Perimeter

School Information

Elementary	Norwood/Theresa
Middle	Spruce/Alphonsus
High	Victoria/Joseph

Additional Information

Date Listed	June 12th, 2025
Days on Market	22
Zoning	Zone 13
Condo Fee	\$825

DATA IS DEEMED RELIABLE BUT IS NOT GUARANTEED ACCURATE BY THE REALTORS® ASSOCIATION OF EDMONTON. COPYRIGHT 2025 BY THE REALTORS® ASSOCIATION OF EDMONTON. ALL RIGHTS RESERVED. Trademarks are owned or controlled by the Canadian Real Estate Association (CREA) and identify real estate professionals who are members of CREA (REALTOR®, REALTORS®) and/or the quality of services they provide (MLS®, Multiple Listing Service®)

Listing information last updated on July 4th, 2025 at 12:33pm MDT