

\$445,000 - 9 Norelle Terrace, St. Albert

MLS® #E4440815

\$445,000

4 Bedroom, 2.50 Bathroom, 1,218 sqft

Single Family on 0.00 Acres

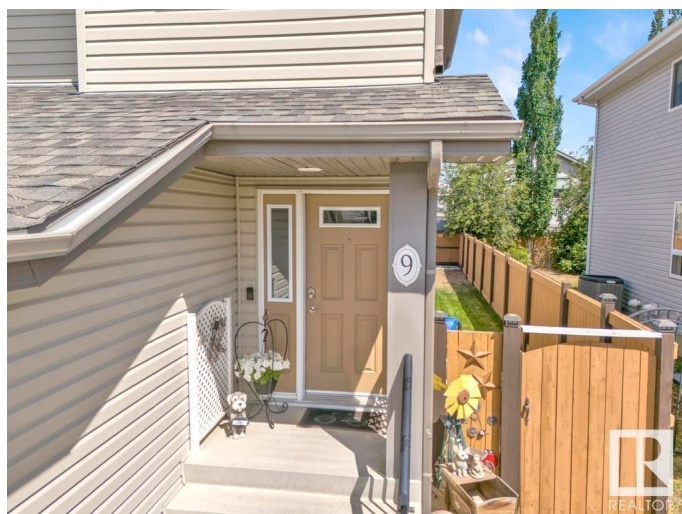
North Ridge, St. Albert, AB

Nestled in a serene neighborhood, this stunning half duplex truly stands out with its immaculate show-home condition. Spanning three beautifully finished levels, it boasts a double attached garage and an expansive deck that overlooks a surprisingly spacious backyard, perfect for family gatherings and outdoor activities. Inside, you'll find three generously sized bedrooms, complemented by the convenience of upstairs laundry. The open-concept main floor features elegant white kitchen cabinets, a striking island, and modern appliances that make cooking a delight. The professionally finished basement adds even more value, showcasing a comfortable bedroom with an en-suite bathroom, along with a cozy family room equipped with a kitchenette. Recent upgrades, including new light fixtures, toilets, and flooring, enhance the overall appeal, making this home a remarkable find for any family.

Built in 2009

Essential Information

| | |
|------------|-----------|
| MLS® # | E4440815 |
| Price | \$445,000 |
| Bedrooms | 4 |
| Bathrooms | 2.50 |
| Full Baths | 2 |



| | |
|----------------|---------------|
| Half Baths | 1 |
| Square Footage | 1,218 |
| Acres | 0.00 |
| Year Built | 2009 |
| Type | Single Family |
| Sub-Type | Half Duplex |
| Style | 2 Storey |
| Status | Active |

Community Information

| | |
|-------------|-------------------|
| Address | 9 Norelle Terrace |
| Area | St. Albert |
| Subdivision | North Ridge |
| City | St. Albert |
| County | ALBERTA |
| Province | AB |
| Postal Code | T8N 3V1 |

Amenities

| | |
|----------------|---|
| Amenities | Carbon Monoxide Detectors, Detectors Smoke, No Animal Home, No Smoking Home |
| Parking Spaces | 4 |
| Parking | Double Garage Attached |

Interior

| | |
|-------------------|---|
| Interior Features | ensuite bathroom |
| Appliances | Dishwasher-Built-In, Dryer, Microwave Hood Fan, Refrigerator, Stove-Electric, Washer, Window Coverings, Refrigerators-Two |
| Heating | Forced Air-1, Natural Gas |
| Stories | 3 |
| Has Basement | Yes |
| Basement | Full, Finished |

Exterior

| | |
|-------------------|---------------------------------|
| Exterior | Wood, Vinyl |
| Exterior Features | Fenced, Landscaped, See Remarks |
| Roof | Asphalt Shingles |
| Construction | Wood, Vinyl |
| Foundation | Concrete Perimeter |

School Information

| | |
|------------|----------------------------|
| Elementary | J.J. Nearing Catholic Elem |
| Middle | Sturgeon Heights |
| High | Bellerose Composite High S |

Additional Information

| | |
|----------------|----------------|
| Date Listed | June 6th, 2025 |
| Days on Market | 9 |
| Zoning | Zone 24 |

DATA IS DEEMED RELIABLE BUT IS NOT GUARANTEED ACCURATE BY THE REALTORS® ASSOCIATION OF EDMONTON. COPYRIGHT 2025 BY THE REALTORS® ASSOCIATION OF EDMONTON. ALL RIGHTS RESERVED.Trademarks are owned or controlled by the Canadian Real Estate Association (CREA) and identify real estate professionals who are members of CREA (REALTOR®, REALTORS®) and/or the quality of services they provide (MLS®, Multiple Listing Service®)

Listing information last updated on June 15th, 2025 at 6:17pm MDT