

## \$189,900 - 1620 48 Street, Edmonton

MLS® #E4440790

**\$189,900**

3 Bedroom, 2.00 Bathroom, 1,248 sqft

Condo / Townhouse on 0.00 Acres

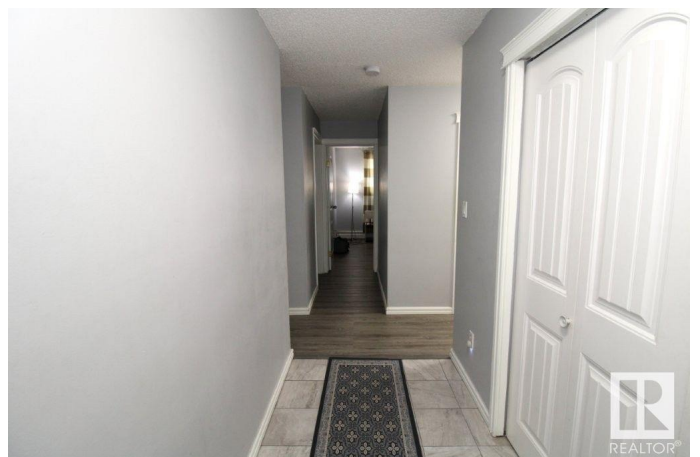
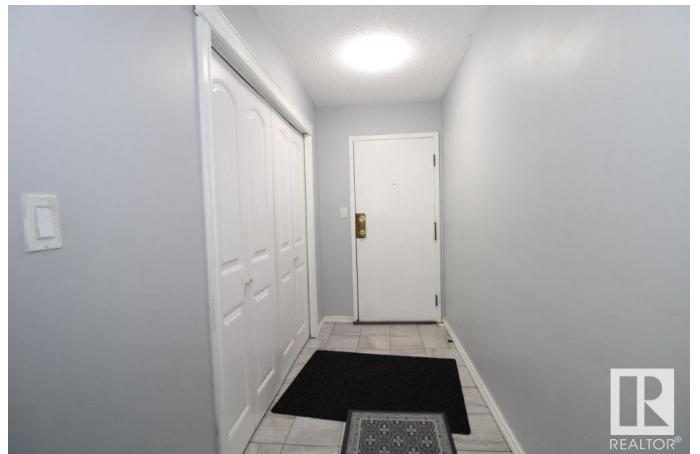
Pollard Meadows, Edmonton, AB

THIS BRIGHT AND UPDATED 3 BEDROOM, 2 BATH APARTMENT IS MOVE IN READY AND PERFECTLY LOCATED IN THE HEART OF MILLWOODS, COMMUNITY OF POLLARD MEADOWS. THIS SPACIOUS UNIT OFFERS A BRIGHT AND OPEN LAYOUT. A FUNCTIONAL KITCHEN IS PERFECT FOR EVERYDAY LIVING. ITS A GREAT FIT FOR FAMILIES, FIRST TIME BUYERS OR ANYONE LOOKING FOR LOW-MAINTENANCE HOME. YOU'LL LOVE BEING JUST STEPS AWAY FROM SHOPPING, SCHOOLS, PUBLIC TRANSIT, PARKS AND ALL THE AMENITIES YOU NEED. WHETHER YOU ARE A FIRST TIME BUYER, A DOWNSIZER, OR AN INVESTER-THIS ONE CHECKS ALL THE BOXES. A GREAT PLACE TO CALL HOME.

Built in 1981

### Essential Information

|                |           |
|----------------|-----------|
| MLS® #         | E4440790  |
| Price          | \$189,900 |
| Bedrooms       | 3         |
| Bathrooms      | 2.00      |
| Full Baths     | 2         |
| Square Footage | 1,248     |
| Acres          | 0.00      |
| Year Built     | 1981      |



|          |                        |
|----------|------------------------|
| Type     | Condo / Townhouse      |
| Sub-Type | Lowrise Apartment      |
| Style    | Single Level Apartment |
| Status   | Active                 |

### Community Information

|             |                 |
|-------------|-----------------|
| Address     | 1620 48 Street  |
| Area        | Edmonton        |
| Subdivision | Pollard Meadows |
| City        | Edmonton        |
| County      | ALBERTA         |
| Province    | AB              |
| Postal Code | T6L 5P1         |

### Amenities

|           |  |
|-----------|--|
| Amenities | Intercom, No Animal Home, No Smoking Home, Parking-Plug-Ins, See Remarks |
| Parking   | No Garage, Stall, See Remarks  |

### Interior

|                   |   |
|-------------------|---|
| Interior Features | ensuite bathroom  |
| Appliances        | Dishwasher-Built-In, Hood Fan, Intercom, Refrigerator, Stove-Electric, See Remarks, Curtains and Blinds |
| Heating           | Baseboard, See Remarks, Natural Gas   |
| # of Stories      | 4   |
| Stories           | 4   |
| Has Basement      | Yes   |
| Basement          | None, No Basement   |

### Exterior

|                   |   |
|-------------------|---|
| Exterior          | Wood, Stucco, See Remarks   |
| Exterior Features | Commercial, Landscaped, Low Maintenance Landscape, Park/Reserve, Public Transportation, Schools, Shopping Nearby, See Remarks |
| Roof              | Asphalt Shingles  |
| Construction      | Wood, Stucco, See Remarks   |
| Foundation        | Concrete Perimeter  |

### School Information

|            |                 |
|------------|-----------------|
| Elementary | POLLARD MEADOWS |
|------------|-----------------|

**Additional Information**

|                |                |
|----------------|----------------|
| Date Listed    | June 6th, 2025 |
| Days on Market | 10             |
| Zoning         | Zone 29        |
| Condo Fee      | \$714          |

DATA IS DEEMED RELIABLE BUT IS NOT GUARANTEED ACCURATE BY THE REALTORS® ASSOCIATION OF EDMONTON. COPYRIGHT 2025 BY THE REALTORS® ASSOCIATION OF EDMONTON. ALL RIGHTS RESERVED.Trademarks are owned or controlled by the Canadian Real Estate Association (CREA) and identify real estate professionals who are members of CREA (REALTOR®, REALTORS®) and/or the quality of services they provide (MLS®, Multiple Listing Service®)

Listing information last updated on June 16th, 2025 at 7:02am MDT