

\$230,000 - 10427 24 Avenue, Edmonton

MLS® #E4440579

\$230,000

3 Bedroom, 1.50 Bathroom, 1,012 sqft
Condo / Townhouse on 0.00 Acres

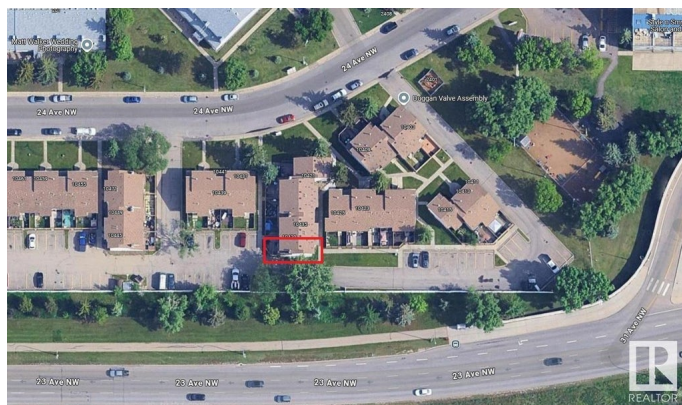
Ermineskin, Edmonton, AB

Charming 3-Bedroom Townhouse in Convenient Ermineskin Location! Ideally situated in the sought-after Ermineskin community, this well-maintained Townhouse is perfect for first-time buyers or investors! Enjoy the convenience of being just minutes from Century Park LRT, schools, shopping, and public transit. This home features 3 spacious bedrooms and a private, fenced yard—ideal for small pets or a safe play area for children. The main floor offers a bright dining space, a functional kitchen with a handy pass-through, a cozy living room with a fireplace, and patio doors leading to your own backyard oasis. A 2-piece bath completes the main level. Upstairs, the large primary bedroom is complemented by two additional bedrooms and a full 4-piece bathroom. The finished basement adds a versatile den and a utility/laundry area with extra storage. A great opportunity in a family-friendly location—don't miss it!

Built in 1978

Essential Information

MLS® #	E4440579
Price	\$230,000
Bedrooms	3
Bathrooms	1.50



Full Baths	1
Half Baths	1
Square Footage	1,012
Acres	0.00
Year Built	1978
Type	Condo / Townhouse
Sub-Type	Townhouse
Style	2 Storey
Status	Active

Community Information

Address	10427 24 Avenue
Area	Edmonton
Subdivision	Ermineskin
City	Edmonton
County	ALBERTA
Province	AB
Postal Code	T6J 4S2

Amenities

Amenities	On Street Parking, Deck, Detectors Smoke, No Animal Home, No Smoking Home
Parking Spaces	1
Parking	Stall

Interior

Appliances	Dishwasher-Built-In, Dryer, Hood Fan, Stove-Electric, Washer, Refrigerators-Two
Heating	Forced Air-1, Natural Gas
Stories	2
Has Basement	Yes
Basement	Full, Partially Finished

Exterior

Exterior	Wood, Stucco, Vinyl
Exterior Features	Fenced, Flat Site, Public Swimming Pool, Public Transportation, Schools, Shopping Nearby
Roof	Asphalt Shingles
Construction	Wood, Stucco, Vinyl

Foundation Concrete Perimeter

Additional Information

Date Listed June 5th, 2025
Days on Market 58
Zoning Zone 16
Condo Fee \$355

DATA IS DEEMED RELIABLE BUT IS NOT GUARANTEED ACCURATE BY THE REALTORS® ASSOCIATION OF EDMONTON. COPYRIGHT 2025 BY THE REALTORS® ASSOCIATION OF EDMONTON. ALL RIGHTS RESERVED.Trademarks are owned or controlled by the Canadian Real Estate Association (CREA) and identify real estate professionals who are members of CREA (REALTOR®, REALTORS®) and/or the quality of services they provide (MLS®, Multiple Listing Service®)
Listing information last updated on August 2nd, 2025 at 3:02pm MDT