

\$447,900 - 7019 Cardinal Way, Edmonton

MLS® #E4439165

\$447,900

4 Bedroom, 3.50 Bathroom, 1,569 sqft

Single Family on 0.00 Acres

Chappelle Area, Edmonton, AB

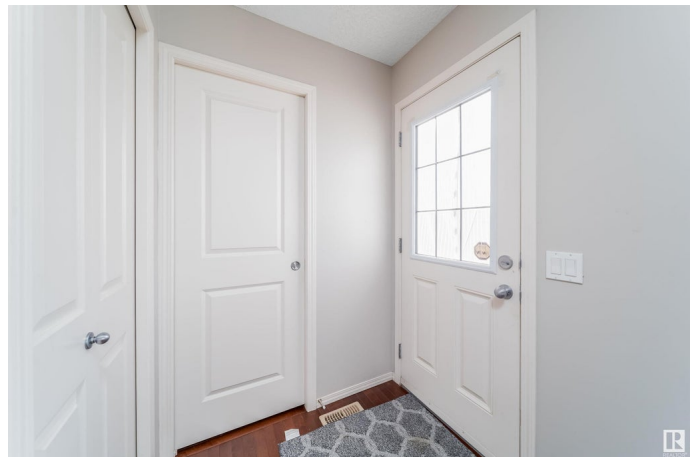
A BEAUTY IN CHAPPELLE! This NO CONDO FEES Home has a total living area of over 2250+ sq.ft. with a FULLY FINISHED basement! 4 Bedrooms and 3.5 Bathroom House with Hardwood & carpet flooring. Main floor boast with DEN, Dining and Living room plus Kitchen with Raised Eating Bar. Upstairs, you'll find a generous size master bedroom with a walk-in closet, as well as two additional large bedrooms and a convenient upper-level laundry room. Good size common bathroom with window for natural light. Basement has 4th bedroom and huge recreation place for friend and family get togethers. A Central Vacuum system to keep carpet clean. House is controlled by Smart Switches, Security Camera + Door Bell which can easily access it from your mobile phone. Huge South Facing Backyard Comes with Storage Shed and Backing to Green open space for Sunset and Sunrise views. This family-oriented community with schools, playgrounds, and shopping nearby, provides a fantastic lifestyle in southwest Edmonton. MUST SEE!!

Built in 2012

Essential Information

MLS® # E4439165

Price \$447,900



Bedrooms	4
Bathrooms	3.50
Full Baths	3
Half Baths	1
Square Footage	1,569
Acres	0.00
Year Built	2012
Type	Single Family
Sub-Type	Half Duplex
Style	2 Storey
Status	Active

Community Information

Address	7019 Cardinal Way
Area	Edmonton
Subdivision	Chappelle Area
City	Edmonton
County	ALBERTA
Province	AB
Postal Code	T6W 1Z1

Amenities

Amenities	Detectors Smoke, Vacuum System-Roughed-In
Parking	Single Garage Attached

Interior

Interior Features	ensuite bathroom
Appliances	Dishwasher-Built-In, Dryer, Garage Control, Garage Opener, Microwave Hood Fan, Refrigerator, Stove-Electric, Washer, Window Coverings
Heating	Forced Air-1, Natural Gas
Stories	2
Has Basement	Yes
Basement	Full, Finished

Exterior

Exterior	Wood, Vinyl
Exterior Features	Airport Nearby, Golf Nearby, Landscaped, Playground Nearby, Schools, Shopping Nearby, See Remarks
Roof	Asphalt Shingles

Construction	Wood, Vinyl
Foundation	Concrete Perimeter

Additional Information

Date Listed	May 29th, 2025
Days on Market	18
Zoning	Zone 55
HOA Fees	100
HOA Fees Freq.	Annually

DATA IS DEEMED RELIABLE BUT IS NOT GUARANTEED ACCURATE BY THE REALTORS® ASSOCIATION OF EDMONTON. COPYRIGHT 2025 BY THE REALTORS® ASSOCIATION OF EDMONTON. ALL RIGHTS RESERVED.Trademarks are owned or controlled by the Canadian Real Estate Association (CREA) and identify real estate professionals who are members of CREA (REALTOR®, REALTORS®) and/or the quality of services they provide (MLS®, Multiple Listing Service®)

Listing information last updated on June 16th, 2025 at 6:02am MDT