

## \$468,000 - 14139 30 Street, Edmonton

MLS® #E4438476

**\$468,000**

4 Bedroom, 2.50 Bathroom, 1,192 sqft  
Single Family on 0.00 Acres

Hairsine, Edmonton, AB

Massive Corner Lot with beautiful Bungalow (over 2350 sq.ft of Living Space), New Flooring on main Floor and Oversize double Garage. Walking distance to School, shopping centre and transit.

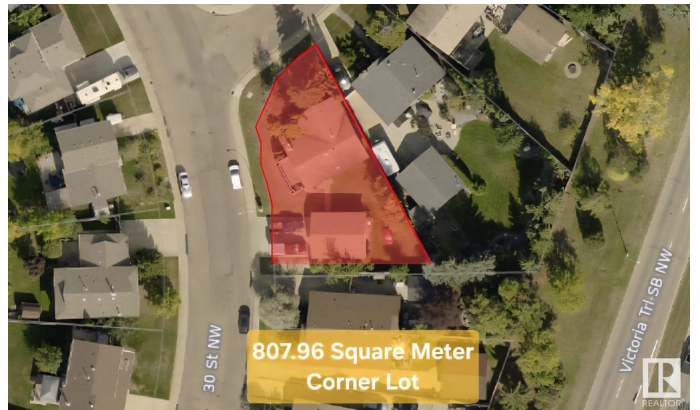
Built in 1978

### Essential Information

|                |                        |
|----------------|------------------------|
| MLS® #         | E4438476               |
| Price          | \$468,000              |
| Bedrooms       | 4                      |
| Bathrooms      | 2.50                   |
| Full Baths     | 2                      |
| Half Baths     | 1                      |
| Square Footage | 1,192                  |
| Acres          | 0.00                   |
| Year Built     | 1978                   |
| Type           | Single Family          |
| Sub-Type       | Detached Single Family |
| Style          | Raised Bungalow        |
| Status         | Active                 |

### Community Information

|             |                 |
|-------------|-----------------|
| Address     | 14139 30 Street |
| Area        | Edmonton        |
| Subdivision | Hairsine        |
| City        | Edmonton        |



|             |         |
|-------------|---------|
| County      | ALBERTA |
| Province    | AB      |
| Postal Code | T5Y 1M6 |

### Amenities

|           |                        |
|-----------|------------------------|
| Amenities | Closet Organizers      |
| Parking   | Double Garage Detached |

### Interior

|                   |   |
|-------------------|---|
| Interior Features | ensuite bathroom  |
| Appliances        | Dishwasher-Built-In, Dryer, Refrigerator, Stove-Electric, Washer, Garage Heater |
| Heating           | Forced Air-1, Natural Gas   |
| Stories           | 2   |
| Has Basement      | Yes   |
| Basement          | Full, Finished  |

### Exterior

|                   |                     |
|-------------------|---------------------|
| Exterior          | Wood, Brick, Stucco |
| Exterior Features | Corner Lot          |
| Roof              | Asphalt Shingles    |
| Construction      | Wood, Brick, Stucco |
| Foundation        | Concrete Perimeter  |

### Additional Information

|                |                |
|----------------|----------------|
| Date Listed    | May 25th, 2025 |
| Days on Market | 22             |
| Zoning         | Zone 35        |

DATA IS DEEMED RELIABLE BUT IS NOT GUARANTEED ACCURATE BY THE REALTORS® ASSOCIATION OF EDMONTON. COPYRIGHT 2025 BY THE REALTORS® ASSOCIATION OF EDMONTON. ALL RIGHTS RESERVED. Trademarks are owned or controlled by the Canadian Real Estate Association (CREA) and identify real estate professionals who are members of CREA (REALTOR®, REALTORS®) and/or the quality of services they provide (MLS®, Multiple Listing Service®)

Listing information last updated on June 16th, 2025 at 6:17am MDT