

\$349,000 - 23 35 Grandin Road, St. Albert

MLS® #E4438406

\$349,000

3 Bedroom, 1.50 Bathroom, 1,003 sqft
Condo / Townhouse on 0.00 Acres

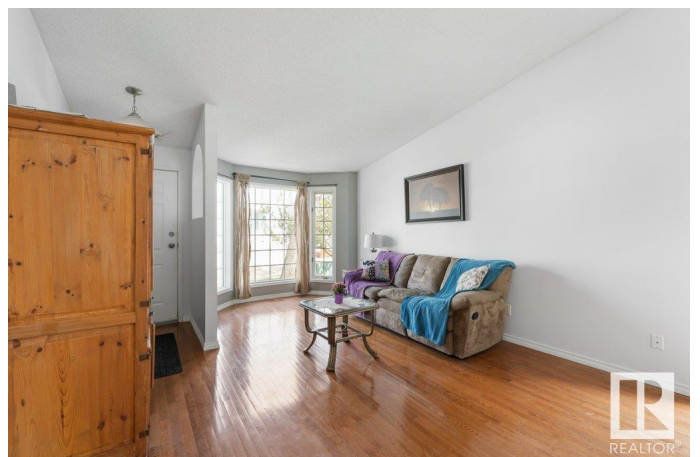
Grandin, St. Albert, AB

Nestled in a prime south-facing location directly BACKING ONTO THE SERENE GRANDIN POND ECO PARK & its picturesque walking paths, this unique 3-level condo offers the perfect blend of charm, comfort, & convenience. The upper 2 floors boast an inviting layout that includes a sun-filled living room w/ hardwood flooring, a formal dining area & an updated kitchen complete w/ new countertops & backsplash. Step outside through the patio doors from the dinette & take in the tranquil views from your private deck. Upstairs, unwind in the stunning family room featuring a cozy STONE F/Pâ€”perfect for relaxing evenings. You'll also find a convenient laundry room & a stylish half bath. Downstairs, the spacious primary suite awaits w/ a walk-in closet & full ensuite bath. 2 additional large bedrooms & a generous utility/storage room feat. NEWER MECHANICAL systems including the furnace, humidifier & hot water tankâ€”provide ample living space. Close to schools, shopping, public transit, & endless outdoor trails!

Built in 1990

Essential Information

MLS® #	E4438406
Price	\$349,000



Bedrooms	3
Bathrooms	1.50
Full Baths	1
Half Baths	1
Square Footage	1,003
Acres	0.00
Year Built	1990
Type	Condo / Townhouse
Sub-Type	Half Duplex
Style	3 Level Split
Status	Active

Community Information

Address	23 35 Grandin Road
Area	St. Albert
Subdivision	Grandin
City	St. Albert
County	ALBERTA
Province	AB
Postal Code	T8N 5W2

Amenities

Amenities	Closet Organizers, Crawl Space, Deck, Parking-Visitor, See Remarks
Parking	Double Garage Attached

Interior

Appliances	Dishwasher-Built-In, Dryer, Garage Control, Hood Fan, Refrigerator, Stove-Electric, Washer
Heating	Forced Air-1, Natural Gas
Fireplace	Yes
Fireplaces	Brick Facing
Stories	2
Has Basement	Yes
Basement	Full, Finished

Exterior

Exterior	Wood, Brick, Vinyl
Exterior Features	Backs Onto Park/Trees, Flat Site, Fruit Trees/Shrubs, See Remarks
Roof	Asphalt Shingles

Construction	Wood, Brick, Vinyl
Foundation	Preserved Wood

Additional Information

Date Listed	May 24th, 2025
Days on Market	29
Zoning	Zone 24
Condo Fee	\$437

DATA IS DEEMED RELIABLE BUT IS NOT GUARANTEED ACCURATE BY THE REALTORS® ASSOCIATION OF EDMONTON. COPYRIGHT 2025 BY THE REALTORS® ASSOCIATION OF EDMONTON. ALL RIGHTS RESERVED.Trademarks are owned or controlled by the Canadian Real Estate Association (CREA) and identify real estate professionals who are members of CREA (REALTOR®, REALTORS®) and/or the quality of services they provide (MLS®, Multiple Listing Service®)

Listing information last updated on June 22nd, 2025 at 5:02pm MDT