

## \$389,900 - 4002/04/06/08 50 Street, Wetaskiwin

MLS® #E4436248

**\$389,900**

2 Bedroom, 1.00 Bathroom, 1,702 sqft  
Condo / Townhouse on 0.00 Acres

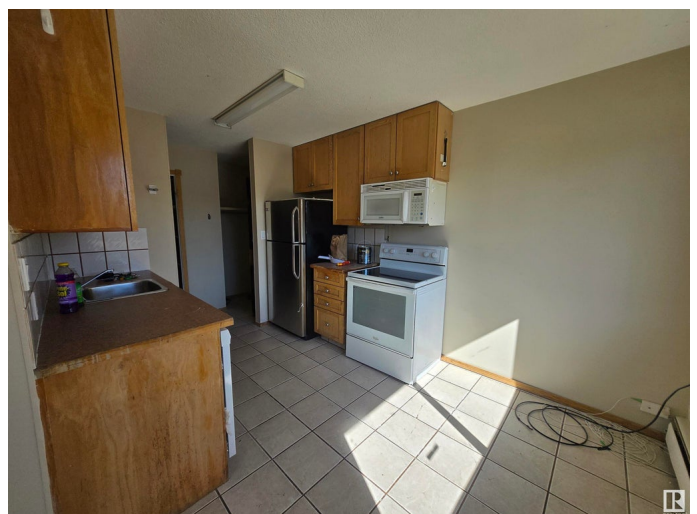
Parkdale (Wetaskiwin), Wetaskiwin, AB

Whether you are starting your rental portfolio or ready to add to it, this property could be the perfect addition. Upstairs are 2 of the 2 bedrooms units, both offering spacious living area and comfort with quiet views of the neighborhood. The 2 downstairs units include a 2 bedroom with the same layout as upstairs and a large 1 bedroom. The building offers a common laundry area, ample powered parking, storage sheds and a fenced green space. With updated windows, roof and cosmetic adjustments where needed, this building is fully rented and ready generate income for you.

Built in 1973

### Essential Information

MLS® #	E4436248
Price	\$389,900
Bedrooms	2
Bathrooms	1.00
Full Baths	1
Square Footage	1,702
Acres	0.00
Year Built	1973
Type	Condo / Townhouse
Sub-Type	4PLEX
Style	Single Level Apartment



Status	Active
--------	--------

## Community Information

Address	4002/04/06/08 50 Street
Area	Wetaskiwin
Subdivision	Parkdale (Wetaskiwin)
City	Wetaskiwin
County	ALBERTA
Province	AB
Postal Code	T9A 2A3

## Amenities

Amenities	Detectors Smoke
Parking	Stall

## Interior

Appliances	Dishwasher-Built-In, Dryer, Refrigerator, Stove-Electric, Washer
Heating	Baseboard, Natural Gas
Stories	2
Has Basement	Yes
Basement	See Remarks

## Exterior

Exterior	Wood, Stucco
Exterior Features	Back Lane, Corner Lot, Fenced, Flat Site, Low Maintenance Landscape, Playground Nearby
Roof	Asphalt Shingles
Construction	Wood, Stucco
Foundation	Concrete Perimeter

## Additional Information

Date Listed	May 13th, 2025
Days on Market	79
Zoning	Zone 80

DATA IS DEEMED RELIABLE BUT IS NOT GUARANTEED ACCURATE BY THE REALTORS® ASSOCIATION OF EDMONTON. COPYRIGHT 2025 BY THE REALTORS® ASSOCIATION OF EDMONTON. ALL RIGHTS RESERVED. Trademarks are owned or controlled by the Canadian Real Estate Association (CREA) and identify real estate professionals who are members of CREA (REALTOR®, REALTORS®) and/or the quality of services they provide (MLS®, Multiple Listing Service®)

Listing information last updated on July 31st, 2025 at 6:32pm MDT