

## \$735,000 - 32 Riviere Terrace, St. Albert

MLS® #E4434249

**\$735,000**

4 Bedroom, 3.00 Bathroom, 1,303 sqft

Single Family on 0.00 Acres

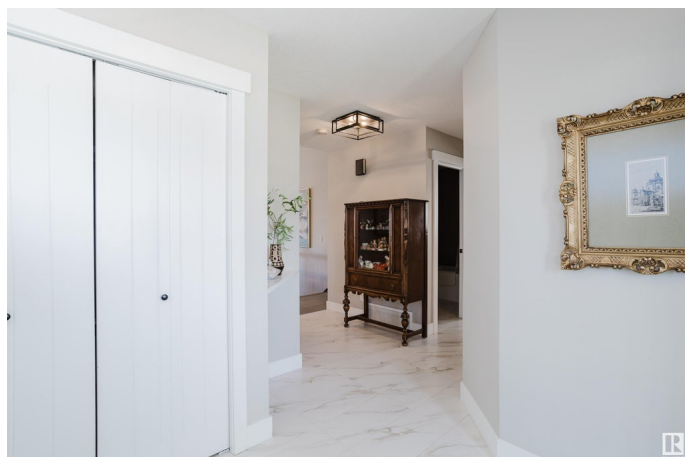
Riverside (St. Albert), St. Albert, AB

In Riverside where peace is found,?This bungalowâ€™s charm will sure astound.?Two beds up and two below,?A finished basement steals the show! Three full baths with style and grace,?One with a tubâ€™your own spa space.?Vaulted ceilings, bold and bright, Fill the rooms with airy light. A cozy fire with just one spark,?The gas-lit glow will warm the dark.?A kitchen built to wow the crowd,?With pot tap high and space allowed. A large back deck where you can dine,?Tall trees behind for a private time.?A double garage, attached with pride,?And a driveway wide with room to slideâ€™?Even your fifth wheel fits with grace,?Thereâ€™s space for all at this fine place. Just down the road, the storeâ€™s in sight,?Grab what you needâ€™day or night!

Built in 2018

### Essential Information

MLS® #	E4434249
Price	\$735,000
Bedrooms	4
Bathrooms	3.00
Full Baths	3
Square Footage	1,303
Acres	0.00
Year Built	2018



Type	Single Family
Sub-Type	Detached Single Family
Style	Bungalow
Status	Active

### Community Information

Address	32 Riviere Terrace
Area	St. Albert
Subdivision	Riverside (St. Albert)
City	St. Albert
County	ALBERTA
Province	AB
Postal Code	T8N 7N9

### Amenities

Amenities	Deck, Detectors Smoke, No Animal Home, No Smoking Home, Vaulted Ceiling, Vinyl Windows, Vacuum System-Roughed-In, HRV System, Natural Gas BBQ Hookup
Parking Spaces	4
Parking	Double Garage Attached, Front Drive Access, Insulated

### Interior

Interior Features	ensuite bathroom
Appliances	Dishwasher-Built-In, Dryer, Garage Opener, Microwave Hood Fan, Refrigerator, Stove-Electric, Vacuum System Attachments, Vacuum Systems, Washer, Window Coverings
Heating	Forced Air-1, Natural Gas
Fireplace	Yes
Fireplaces	Heatilator/Fan, Tile Surround
Stories	2
Has Basement	Yes
Basement	Full, Finished

### Exterior

Exterior	Wood, Stone, Vinyl
Exterior Features	Fenced, Fruit Trees/Shrubs, Landscaped, No Back Lane, Playground Nearby, Public Transportation
Roof	Asphalt Shingles
Construction	Wood, Stone, Vinyl
Foundation	Concrete Perimeter

**Additional Information**

Date Listed            May 2nd, 2025  
Days on Market      16  
Zoning                Zone 24

DATA IS DEEMED RELIABLE BUT IS NOT GUARANTEED ACCURATE BY THE REALTORS® ASSOCIATION OF EDMONTON. COPYRIGHT 2025 BY THE REALTORS® ASSOCIATION OF EDMONTON. ALL RIGHTS RESERVED.Trademarks are owned or controlled by the Canadian Real Estate Association (CREA) and identify real estate professionals who are members of CREA (REALTOR®, REALTORS®) and/or the quality of services they provide (MLS®, Multiple Listing Service®)  
Listing information last updated on May 17th, 2025 at 9:47pm MDT