

## \$584,900 - 303 Bridgeport Place, Leduc

MLS® #E4433310

**\$584,900**

3 Bedroom, 2.50 Bathroom, 2,246 sqft

Single Family on 0.00 Acres

Bridgeport, Leduc, AB

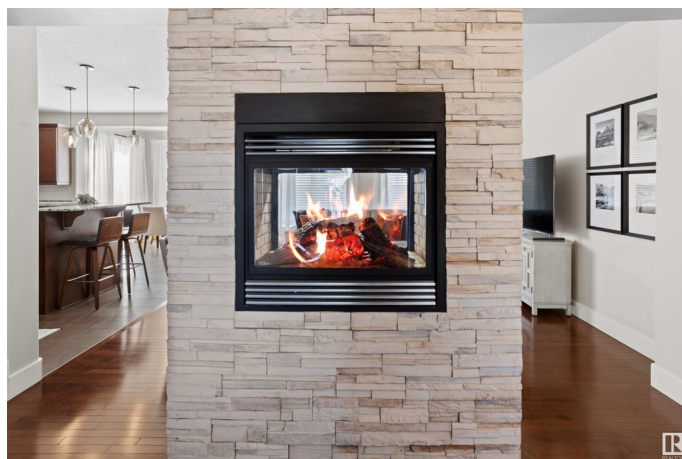
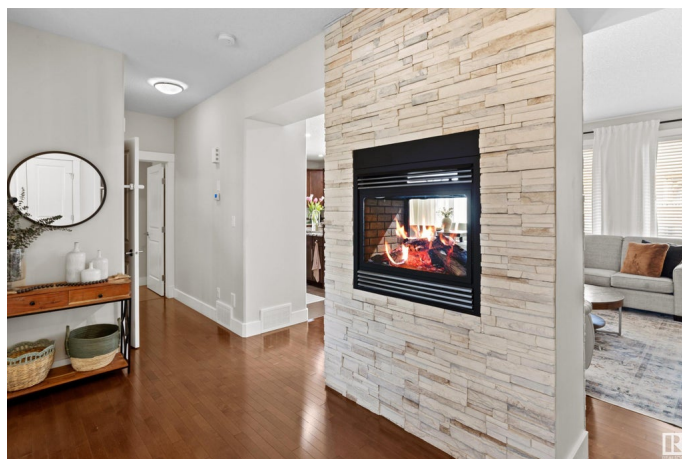
Located in the quiet and family-friendly community of Bridgeport, this former Western Living Showhome offers 2245 sq ft of upgraded living space. A spacious foyer welcomes you with a double-sided fireplace and cozy living room. The large kitchen features soft-close cabinets, a walk-thru pantry, an eat-up island bar, and plenty of storage. Just off the kitchen is the dining area, leading out to the covered rear deckâ€”perfect for indoor-outdoor living. You will enjoy the nicely landscaped and fenced yard. Upstairs youâ€™ll find a vaulted bonus room with fireplace, three bedrooms, a full bathroom, and convenient upper-floor laundry. The primary suite offers a spa-like ensuite with double sinks, a soaker tub, and separate shower. Thereâ€™s also a half bath on the main floor. The basement is unfinished and ready for you to design the space you need. Oversized double attached garage, air conditioning, and nearby walking paths complete this well-maintained home. Hot tub hook-up in backyard.

Built in 2010

### Essential Information

MLS® # E4433310

Price \$584,900



Bedrooms	3
Bathrooms	2.50
Full Baths	2
Half Baths	1
Square Footage	2,246
Acres	0.00
Year Built	2010
Type	Single Family
Sub-Type	Detached Single Family
Style	2 Storey
Status	Active

### Community Information

Address	303 Bridgeport Place
Area	Leduc
Subdivision	Bridgeport
City	Leduc
County	ALBERTA
Province	AB
Postal Code	T9E 0M2

### Amenities

Amenities	Air Conditioner, Deck
Parking	Double Garage Attached

### Interior

Interior Features	ensuite bathroom
Appliances	Air Conditioning-Central, Dishwasher-Built-In, Dryer, Microwave Hood Fan, Refrigerator, Stove-Electric, Washer
Heating	Forced Air-1, Natural Gas
Fireplace	Yes
Fireplaces	Direct Vent, Double Sided
Stories	2
Has Basement	Yes
Basement	Full, Unfinished

### Exterior

Exterior	Wood, Vinyl
Exterior Features	Fenced, Landscaped

Roof	Asphalt Shingles
Construction	Wood, Vinyl
Foundation	Concrete Perimeter

**Additional Information**

Date Listed	April 28th, 2025
Days on Market	9
Zoning	Zone 81

DATA IS DEEMED RELIABLE BUT IS NOT GUARANTEED ACCURATE BY THE REALTORS® ASSOCIATION OF EDMONTON. COPYRIGHT 2025 BY THE REALTORS® ASSOCIATION OF EDMONTON. ALL RIGHTS RESERVED.Trademarks are owned or controlled by the Canadian Real Estate Association (CREA) and identify real estate professionals who are members of CREA (REALTOR®, REALTORS®) and/or the quality of services they provide (MLS®, Multiple Listing Service®)

Listing information last updated on May 7th, 2025 at 5:02pm MDT