

# \$180,000 - N/A, Edmonton

MLS® #E4432197

**\$180,000**

2 Bedroom, 1.00 Bathroom, 931 sqft  
Single Family on 0.00 Acres

Calder, Edmonton, AB

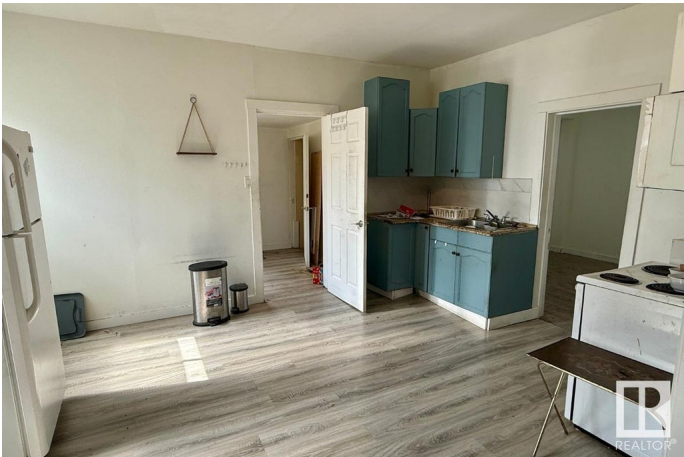
Opportunity knocksâ€”for those with vision and a tool belt. This home needs work, no doubt about it, but it offers a blank canvas for the savvy investor or buyer willing to roll up their sleeves. With a newer hot water tank and furnace already in place, some of the heavy lifting is done. The rest? Well, thatâ€™s where your creativity (and elbow grease) comes in. Priced to reflect the condition, this is a chance to add serious valueâ€”but itâ€™s not for the timid.

Built in 1916

## Essential Information

MLS® #	E4432197
Price	\$180,000
Bedrooms	2
Bathrooms	1.00
Full Baths	1
Square Footage	931
Acres	0.00
Year Built	1916
Type	Single Family
Sub-Type	Detached Single Family
Style	Bungalow
Status	Active

## Community Information



Address	N/A
Area	Edmonton
Subdivision	Calder
City	Edmonton
County	ALBERTA
Province	AB
Postal Code	T5E 5K8

### **Amenities**

Amenities	See Remarks
Parking	No Parking

### **Interior**

Appliances	Dryer, Refrigerator, Stove-Electric, Washer
Heating	Forced Air-1, Natural Gas
Stories	1
Has Basement	Yes
Basement	Full, Unfinished

### **Exterior**

Exterior	Wood, Stone, Vinyl
Exterior Features	Back Lane, Fenced, Playground Nearby, Public Transportation, Schools, Shopping Nearby
Roof	Asphalt Shingles
Construction	Wood, Stone, Vinyl
Foundation	Concrete Perimeter

### **Additional Information**

Date Listed	April 23rd, 2025
Days on Market	7
Zoning	Zone 01

DATA IS DEEMED RELIABLE BUT IS NOT GUARANTEED ACCURATE BY THE REALTORS® ASSOCIATION OF EDMONTON. COPYRIGHT 2025 BY THE REALTORS® ASSOCIATION OF EDMONTON. ALL RIGHTS RESERVED. Trademarks are owned or controlled by the Canadian Real Estate Association (CREA) and identify real estate professionals who are members of CREA (REALTOR®, REALTORS®) and/or the quality of services they provide (MLS®, Multiple Listing Service®)

Listing information last updated on April 30th, 2025 at 5:02am MDT