

\$187,500 - 801 10106 105 Street, Edmonton

MLS® #E4426350

\$187,500

2 Bedroom, 2.00 Bathroom, 1,540 sqft
Condo / Townhouse on 0.00 Acres

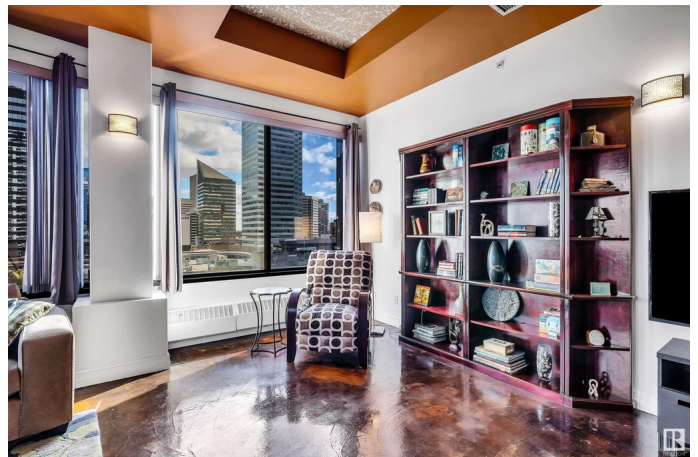
Downtown (Edmonton), Edmonton, AB

OPEN CONCEPT LOFT! 2 BEDROOMS + 2 BATHS. This 1,539 sq ft, 8th floor unit features an open layout with polished concrete & ceramic tile flooring, soaring 10 ft ceilings, and breathtaking panoramic views of downtown Edmonton. The spacious living room flows into an impressive kitchen, complete with a center island that seats two, an abundance of cabinets and ample counter space, all adjacent to the dining area - perfect for entertaining or intimate dinners. The primary bedroom includes a 4-pce ensuite bath & walk-in closet. The 2nd bedroom with a Murphy Bed can double as an office if required. The unit is finished with a second 3-pce bathroom and in-suite laundry for added convenience. 1 stall in parkade. Located across from a park currently being expanded and revitalized by the City, providing a beautiful outdoor space for relaxation. Enjoy great access to public transportation, allowing you to easily navigate the city, as well as proximity to excellent post-secondary schools & much more! **ONLY \$187,500.00**

Built in 1973

Essential Information

| | |
|--------|-----------|
| MLS® # | E4426350 |
| Price | \$187,500 |



| | |
|----------------|---------------------|
| Bedrooms | 2 |
| Bathrooms | 2.00 |
| Full Baths | 2 |
| Square Footage | 1,540 |
| Acres | 0.00 |
| Year Built | 1973 |
| Type | Condo / Townhouse |
| Sub-Type | Apartment High Rise |
| Style | Loft |
| Status | Active |

Community Information

| | |
|-------------|----------------------|
| Address | 801 10106 105 Street |
| Area | Edmonton |
| Subdivision | Downtown (Edmonton) |
| City | Edmonton |
| County | ALBERTA |
| Province | AB |
| Postal Code | T5J 5E7 |

Amenities

| | |
|----------------|--|
| Amenities | Ceiling 10 ft., No Animal Home, No Smoking Home, Sprinkler System-Fire, Storage-In-Suite, Wall Unit-Built-In |
| Parking Spaces | 1 |
| Parking | Parkade |

Interior

| | |
|-------------------|---|
| Interior Features | ensuite bathroom |
| Appliances | Dryer, Microwave Hood Fan, Refrigerator, Stove-Electric, Washer |
| Heating | Baseboard, Natural Gas |
| # of Stories | 11 |
| Stories | 1 |
| Has Basement | Yes |
| Basement | None, No Basement |

Exterior

| | |
|-------------------|--|
| Exterior | Concrete |
| Exterior Features | Golf Nearby, Park/Reserve, Public Transportation, Schools, Shopping Nearby, View City, View Downtown |

| | |
|--------------|--------------------|
| Roof | SBS Roofing System |
| Construction | Concrete |
| Foundation | Concrete Perimeter |

Additional Information

| | |
|----------------|------------------|
| Date Listed | March 19th, 2025 |
| Days on Market | 42 |
| Zoning | Zone 12 |
| Condo Fee | \$983 |

DATA IS DEEMED RELIABLE BUT IS NOT GUARANTEED ACCURATE BY THE REALTORS® ASSOCIATION OF EDMONTON. COPYRIGHT 2025 BY THE REALTORS® ASSOCIATION OF EDMONTON. ALL RIGHTS RESERVED.Trademarks are owned or controlled by the Canadian Real Estate Association (CREA) and identify real estate professionals who are members of CREA (REALTOR®, REALTORS®) and/or the quality of services they provide (MLS®, Multiple Listing Service®)

Listing information last updated on April 30th, 2025 at 7:02pm MDT